

CHART 1: PRIVATE SECTOR JOB COUNT

(Seasonally Adjusted)
NEW YORK STATE
JANUARY 1990 - NOVEMBER 2008

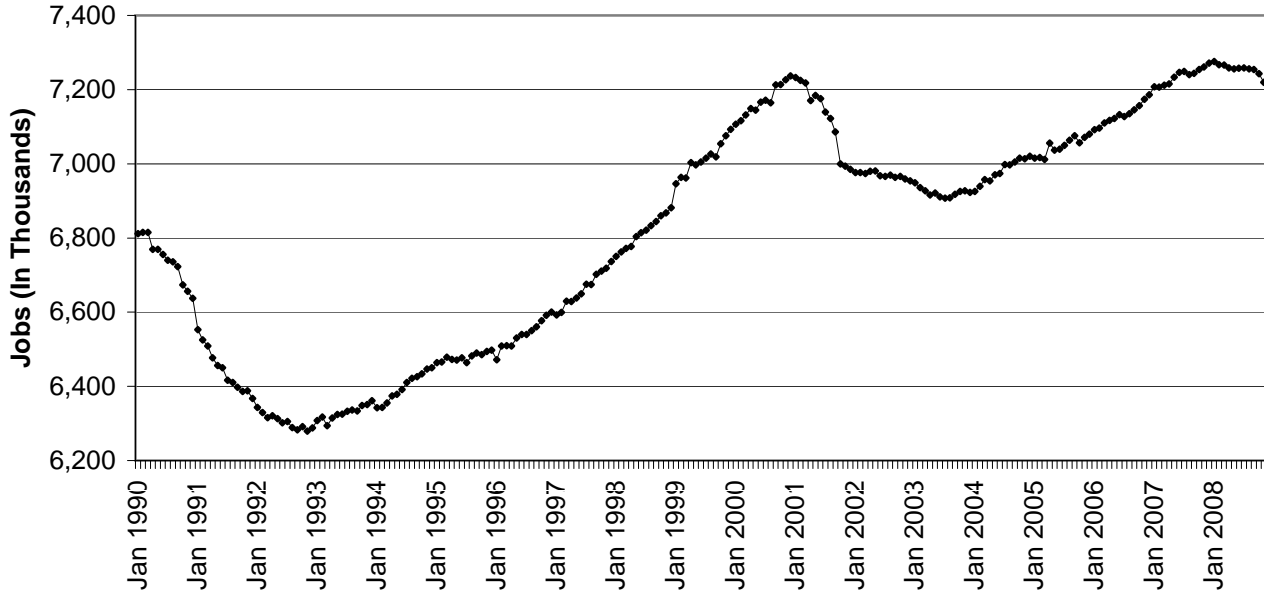
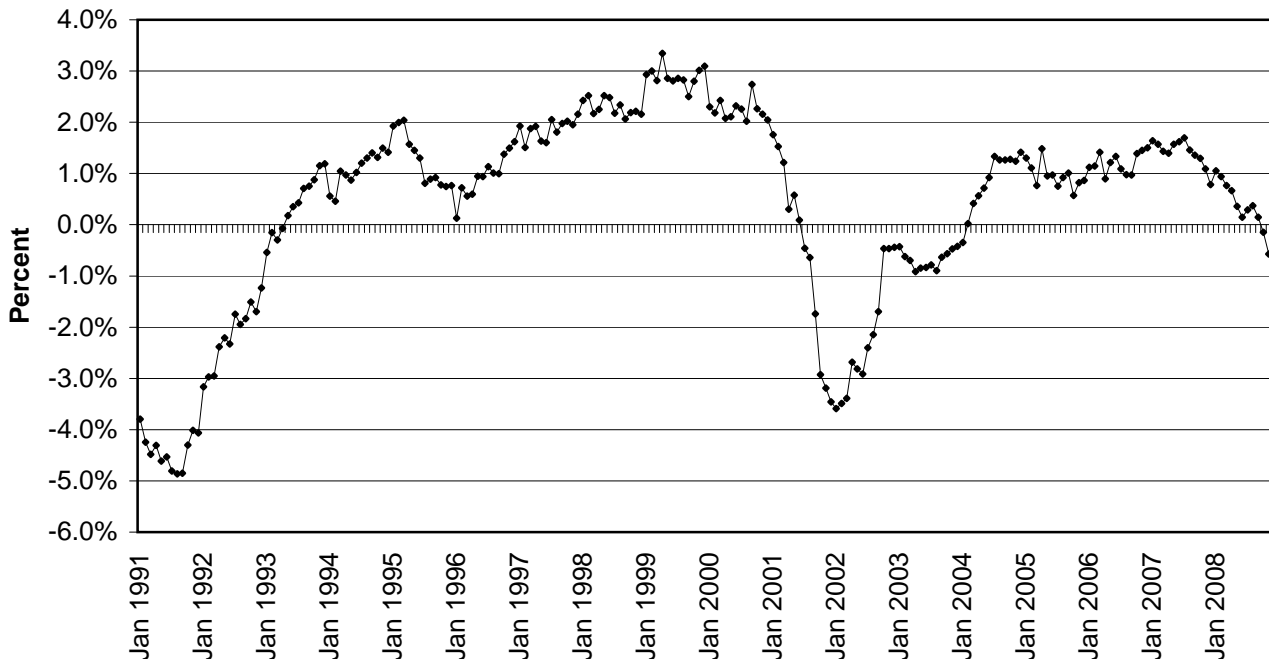


CHART 2: OVER-THE-YEAR CHANGE IN PRIVATE SECTOR JOBS

(Not Seasonally Adjusted)
NEW YORK STATE
JANUARY 1991 - NOVEMBER 2008



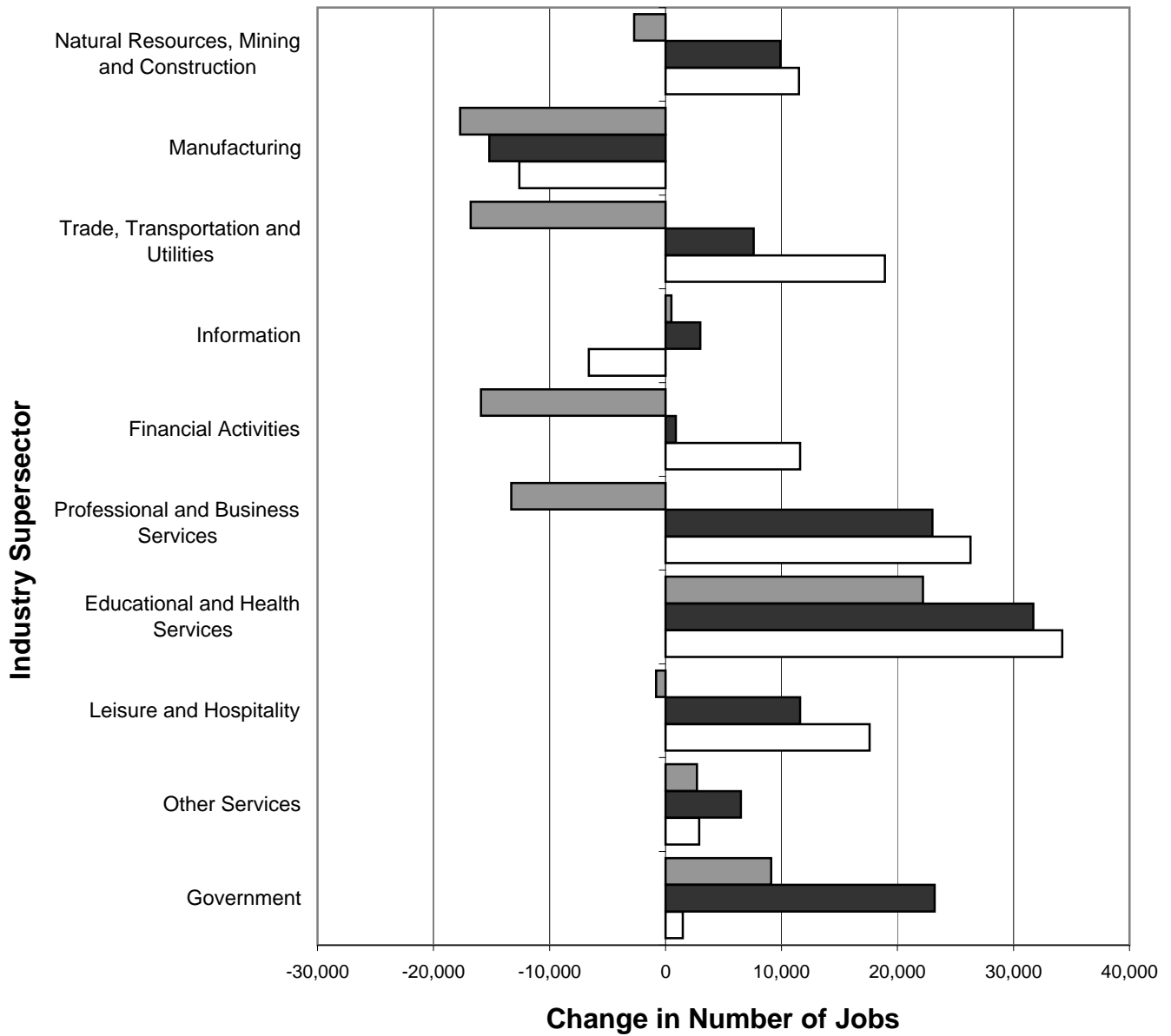
Note: The current private sector jobs series begins in January 1990; thus, over-the-year changes in the series start in January 1991.

CHART 3: OVER-THE-YEAR CHANGE IN NONFARM JOBS BY SUPERSECTOR

NEW YORK STATE

(Not Seasonally Adjusted)

NOVEMBER 2005-NOVEMBER 2006, NOVEMBER 2006-NOVEMBER 2007, NOVEMBER 2007-NOVEMBER 2008

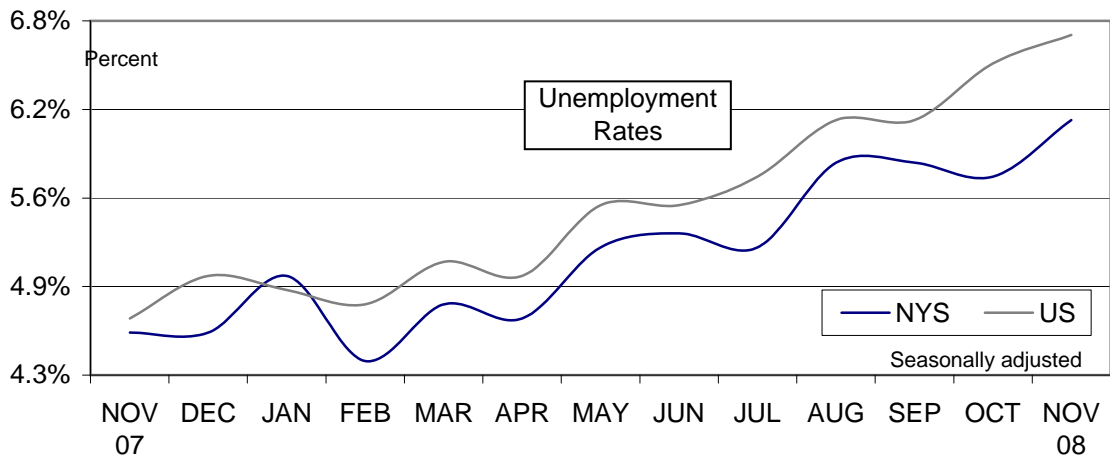


□ NOV 2005-NOV 2006 ■ NOV 2006-NOV 2007 ▒ NOV 2007-NOV 2008

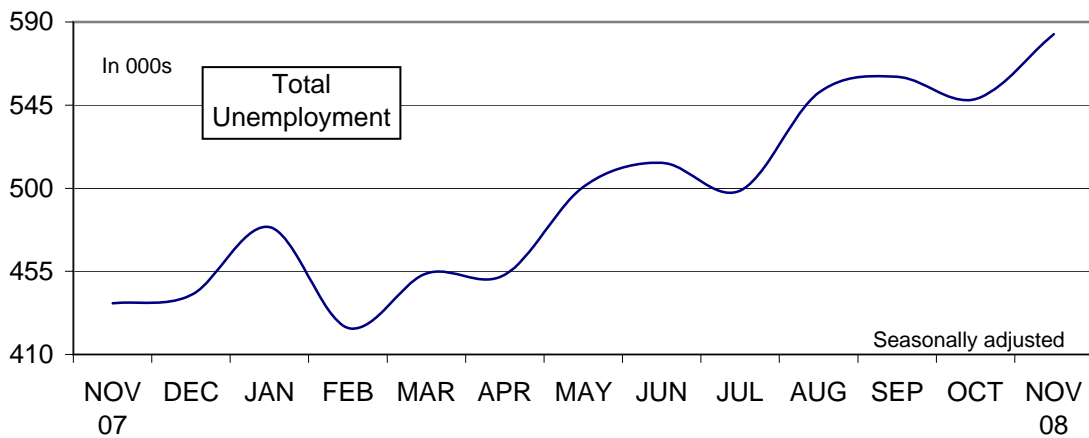
CHART 4: LABOR FORCE STATISTICS IN NOVEMBER 2008

In November...

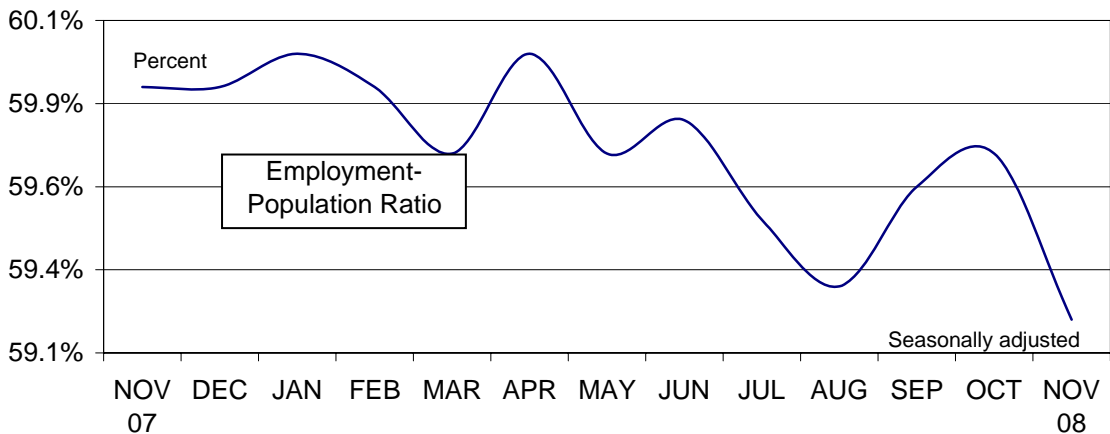
...NYS unemployment rate increased



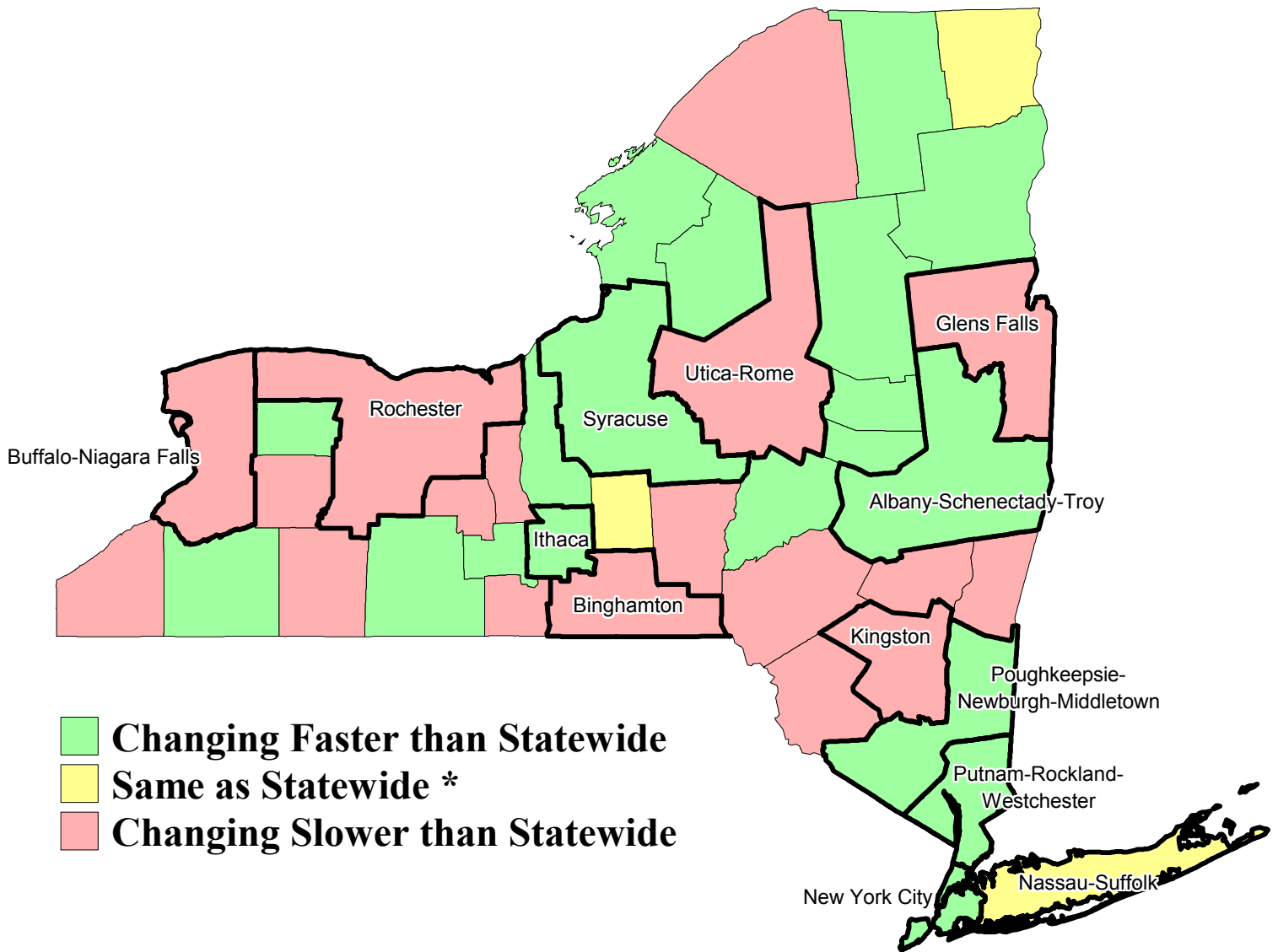
...NYS total unemployment increased



...NYS labor force participation decreased



Private Sector Job Change by Area, New York State, November 2007 - November 2008



* Represents job change of between -0.5% and -0.7%
from November 2007 to November 2008