

CHART 1: PRIVATE SECTOR JOB COUNT

(Seasonally Adjusted)
NEW YORK STATE
JANUARY 1990 - DECEMBER 2008

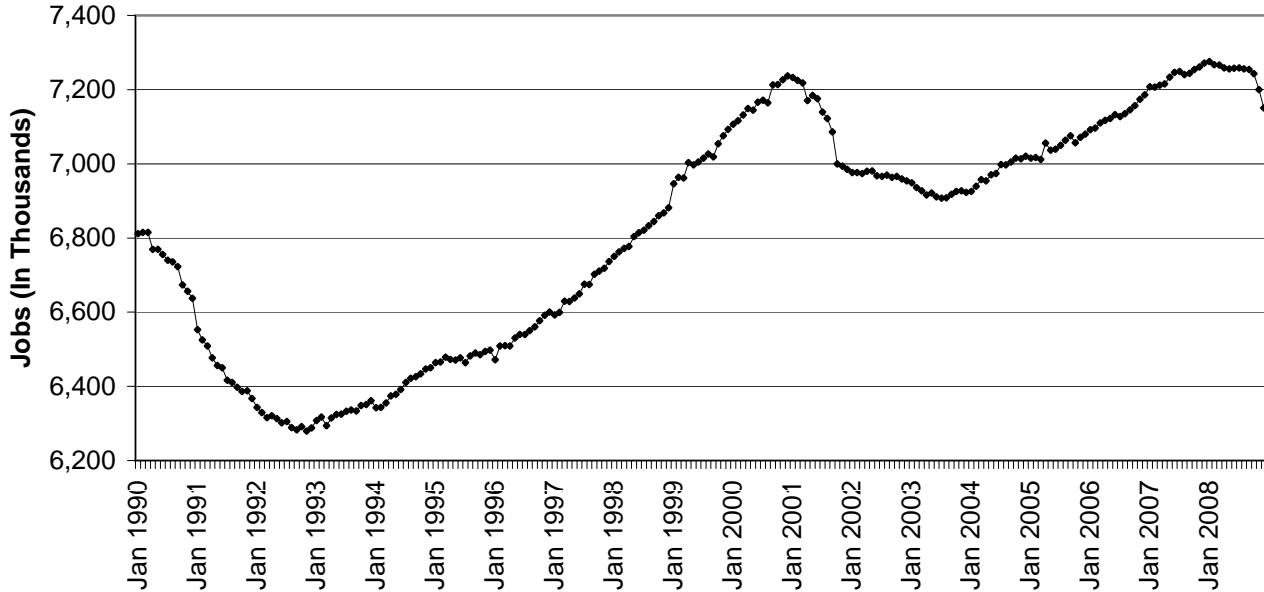
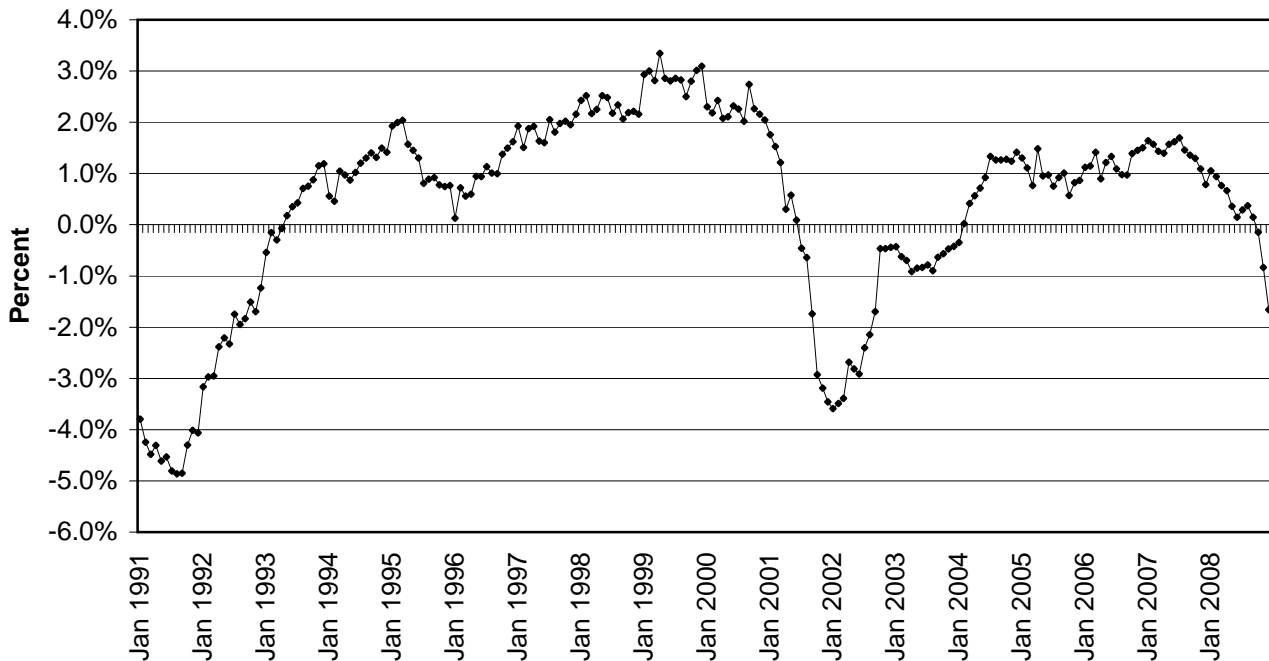


CHART 2: OVER-THE-YEAR CHANGE IN PRIVATE SECTOR JOBS

(Not Seasonally Adjusted)
NEW YORK STATE
JANUARY 1991 - DECEMBER 2008



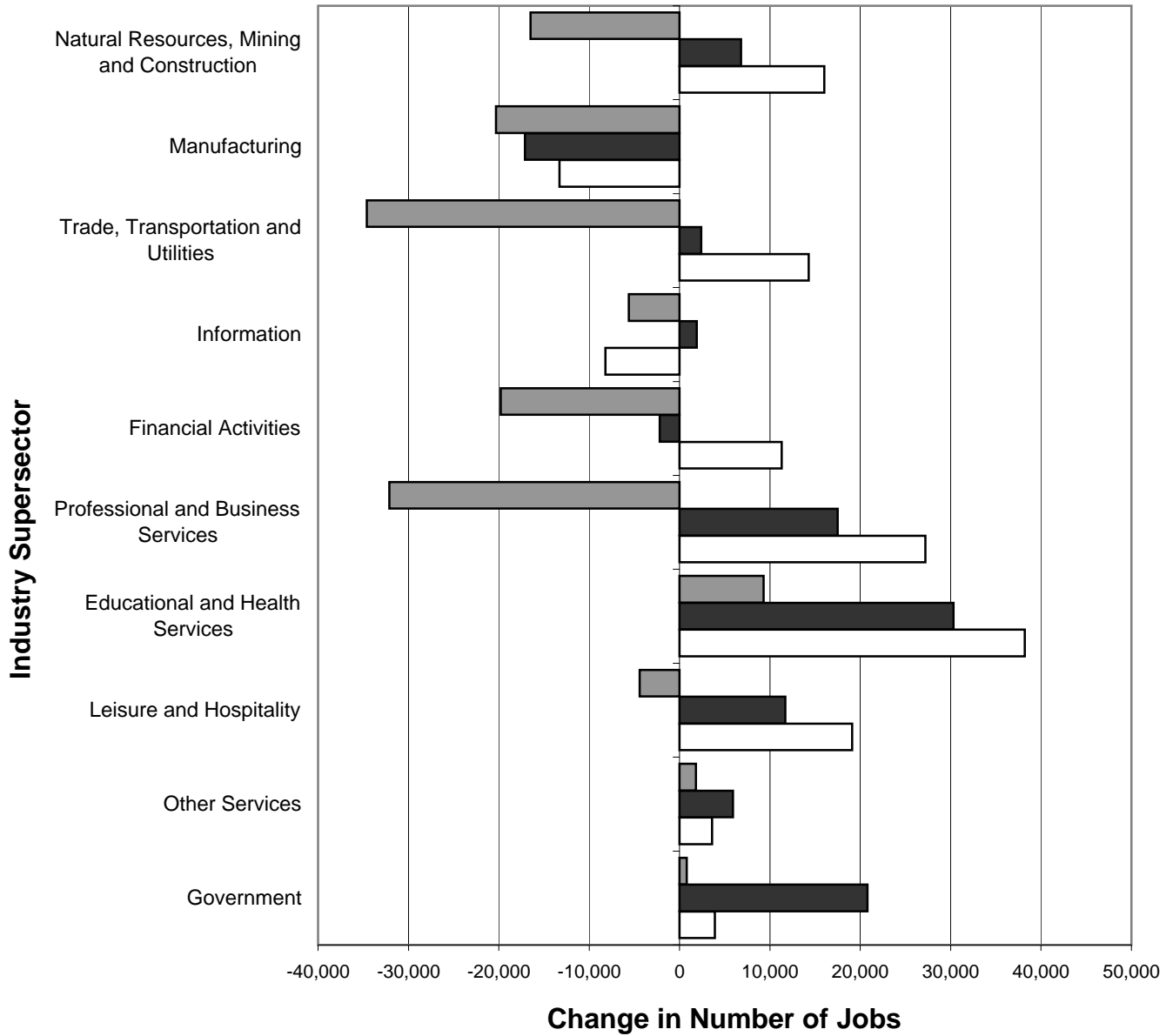
Note: The current private sector jobs series begins in January 1990; thus, over-the-year changes in the series start in January 1991.

CHART 3: OVER-THE-YEAR CHANGE IN NONFARM JOBS BY SUPERSECTOR

NEW YORK STATE

(Not Seasonally Adjusted)

DECEMBER 2005-DECEMBER 2006, DECEMBER 2006-DECEMBER 2007, DECEMBER 2007-DECEMBER 2008

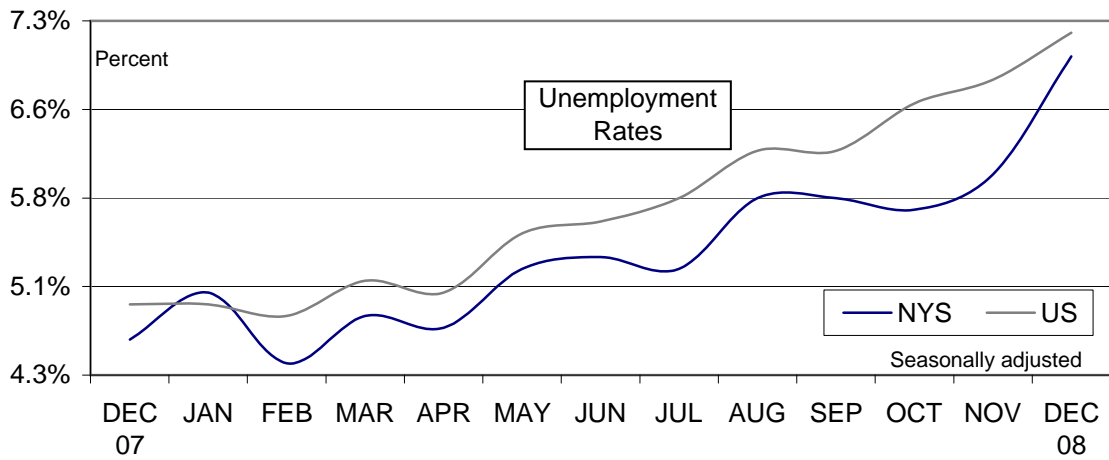


□ DEC 2005-DEC 2006 ■ DEC 2006-DEC 2007 ▒ DEC 2007-DEC 2008

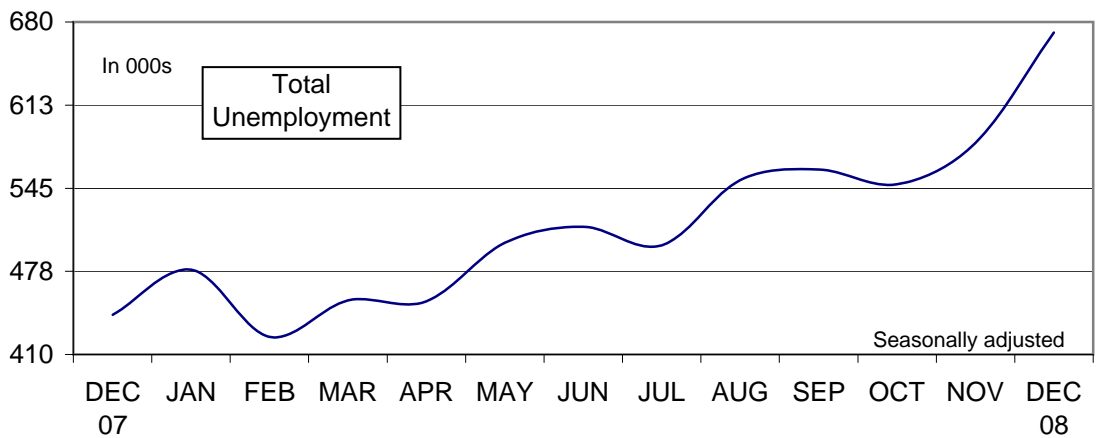
CHART 4: LABOR FORCE STATISTICS IN DECEMBER 2008

In December...

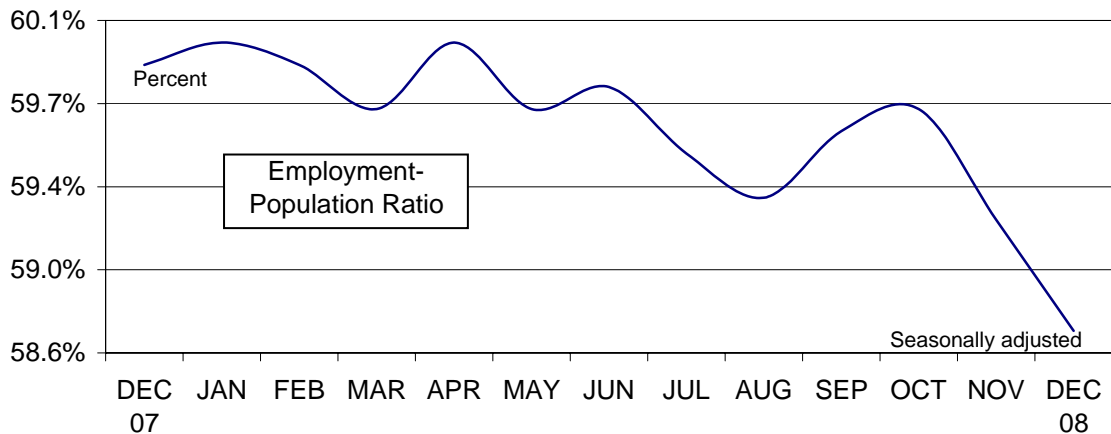
...NYS unemployment rate increased



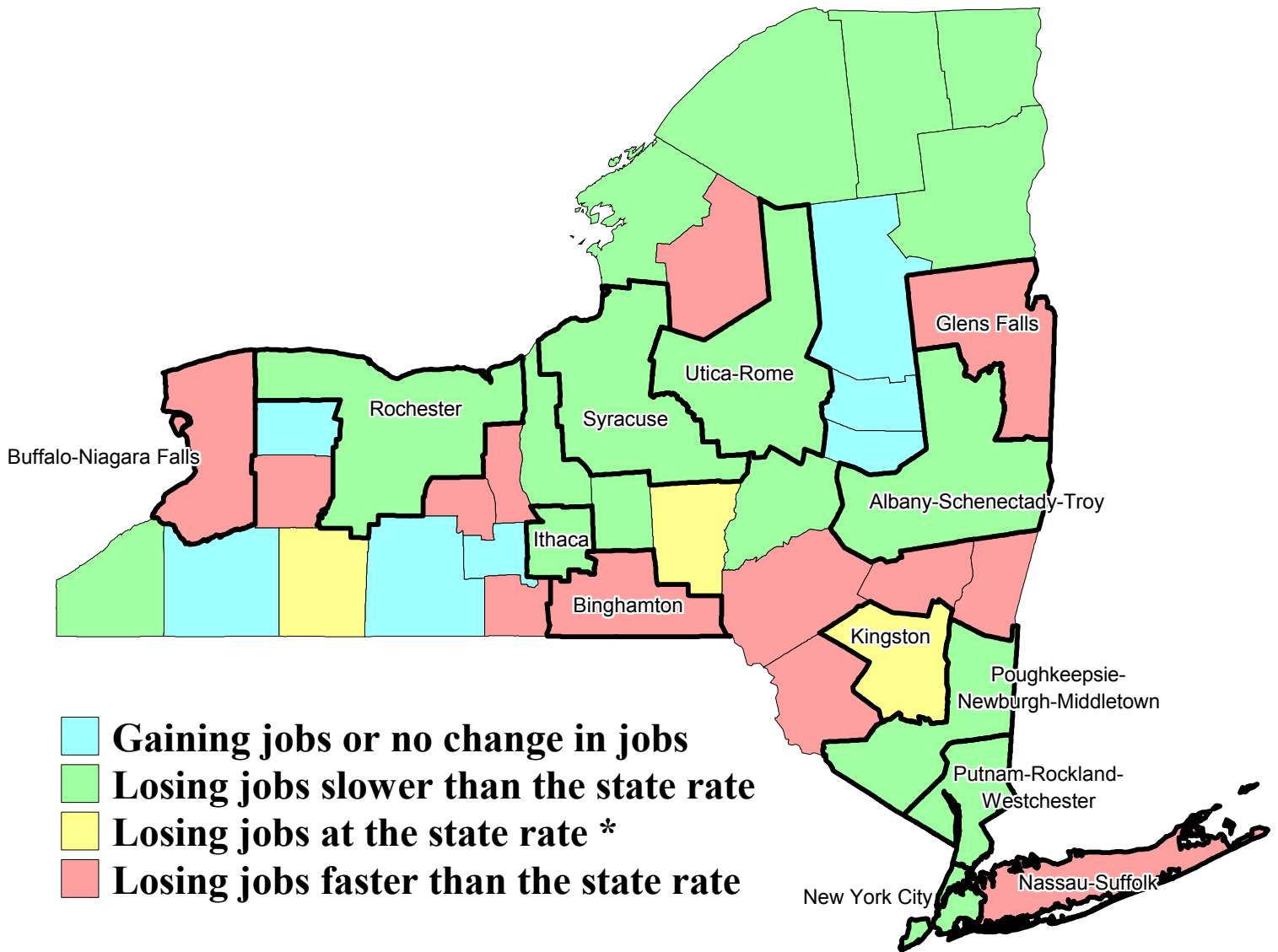
...NYS total unemployment increased



...NYS labor force participation decreased



Private Sector Job Growth by Area, New York State, December 2007 - December 2008



* Represents job loss of between -1.6% and -1.8% from December 2007 to December 2008