

CHART 1: PRIVATE SECTOR JOB COUNT

(Seasonally Adjusted)
NEW YORK STATE
JANUARY 1990 - MAY 2009

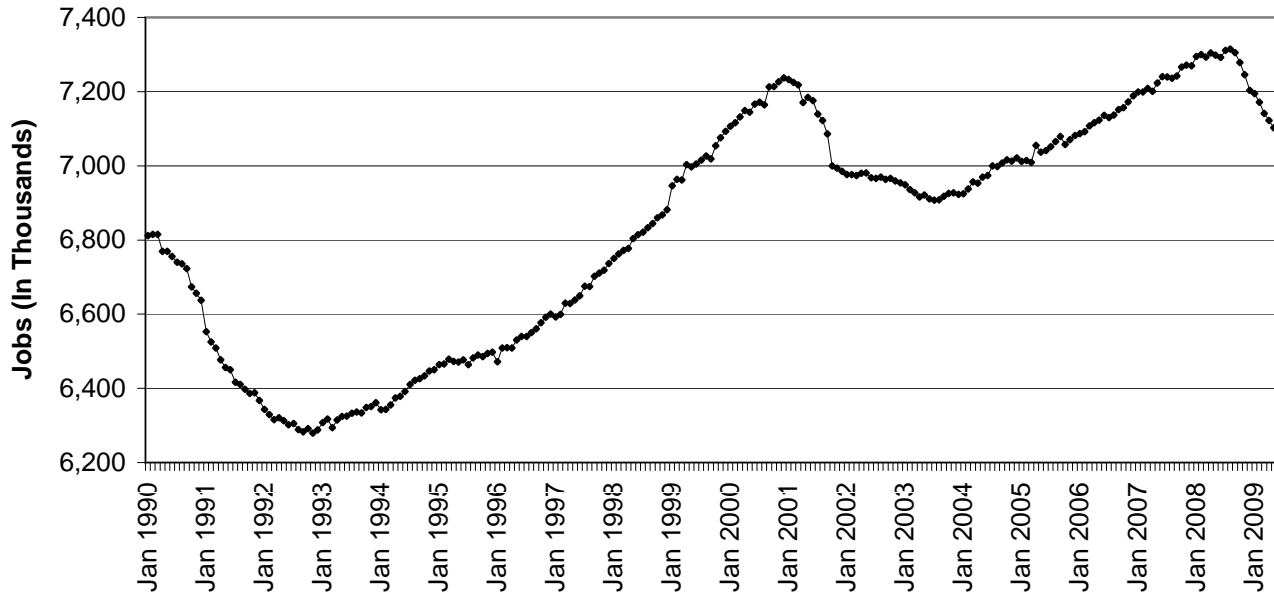
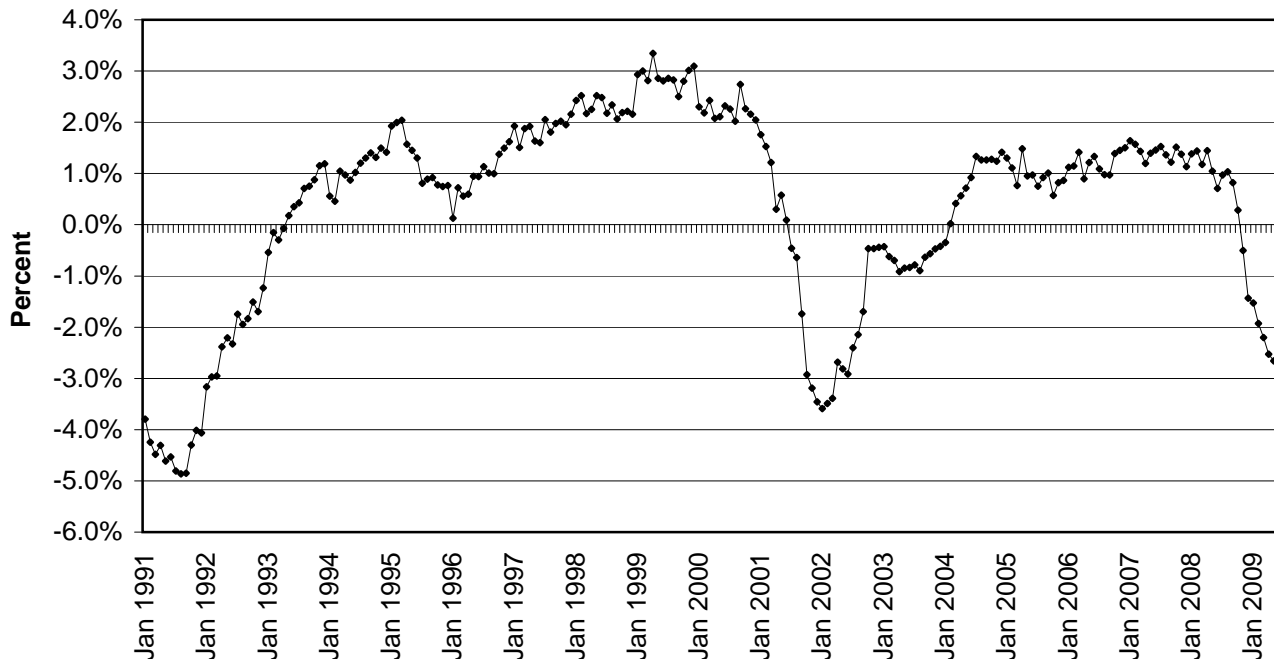


CHART 2: OVER-THE-YEAR CHANGE IN PRIVATE SECTOR JOBS

(Not Seasonally Adjusted)
NEW YORK STATE
JANUARY 1991 - MAY 2009



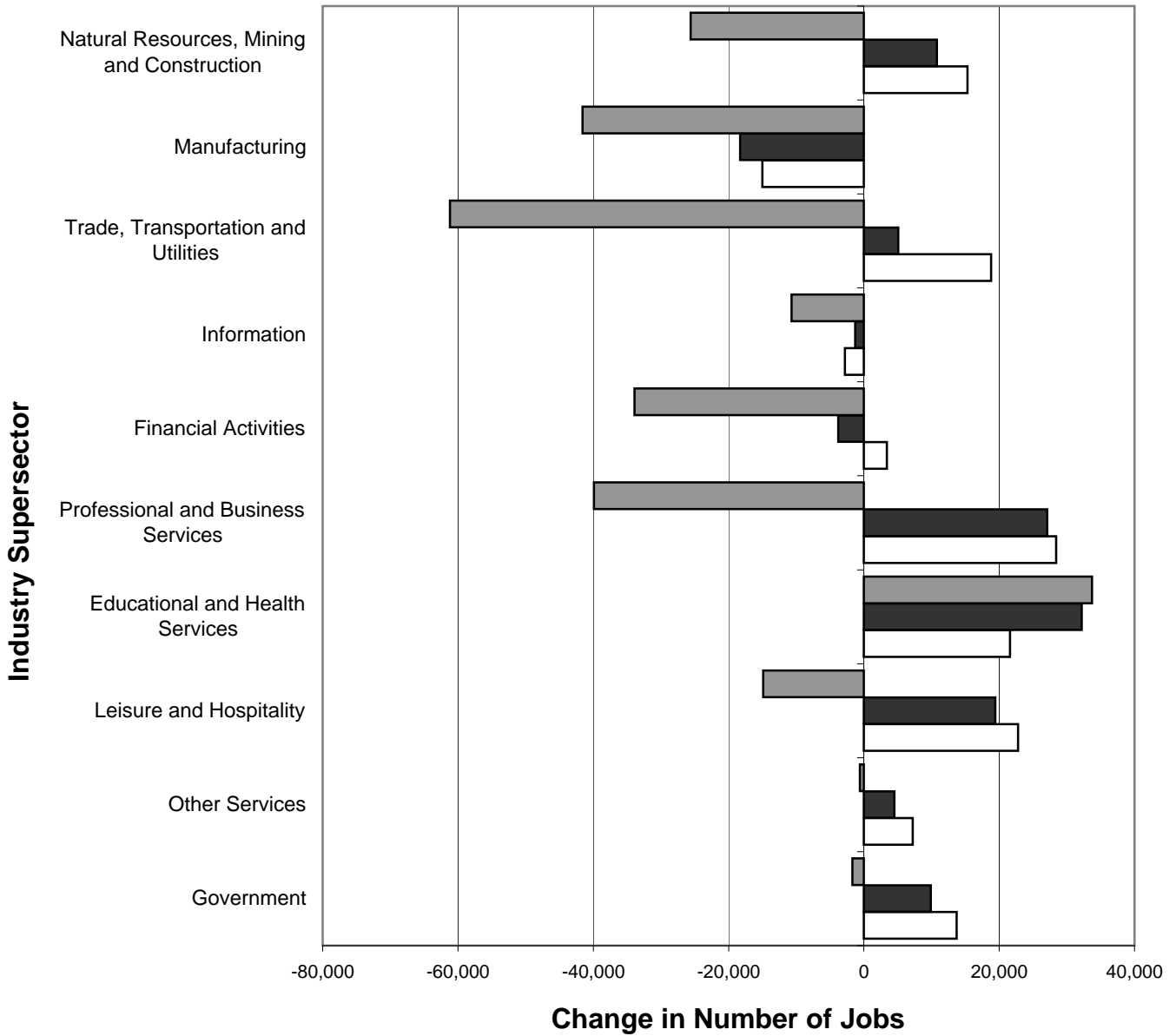
Note: The current private sector jobs series begins in January 1990; thus, over-the-year changes in the series start in January 1991.

CHART 3: OVER-THE-YEAR CHANGE IN NONFARM JOBS BY SUPERSECTOR

NEW YORK STATE

(Not Seasonally Adjusted)

MAY 2006-MAY 2007, MAY 2007-MAY 2008, MAY 2008-MAY 2009

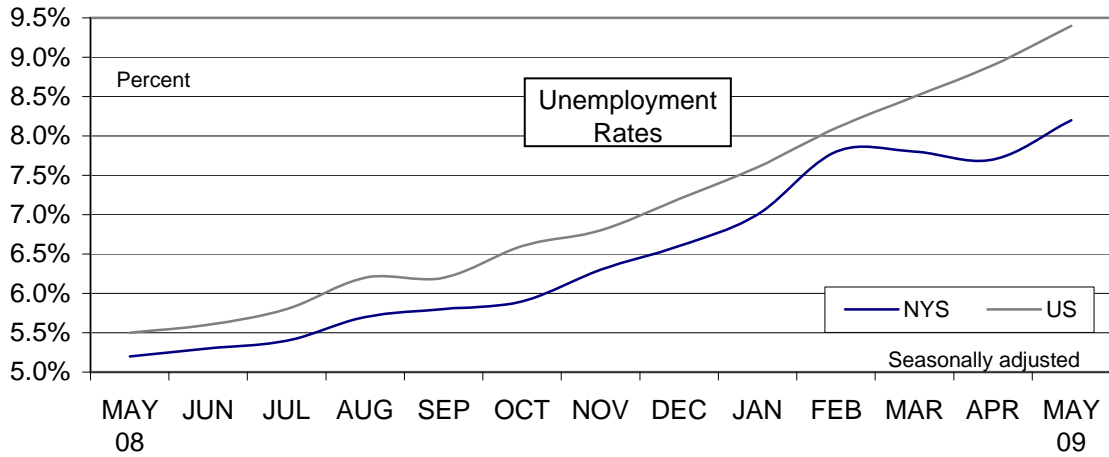


□ MAY 2006-MAY 2007 ■ MAY 2007-MAY 2008 ▒ MAY 2008-MAY 2009

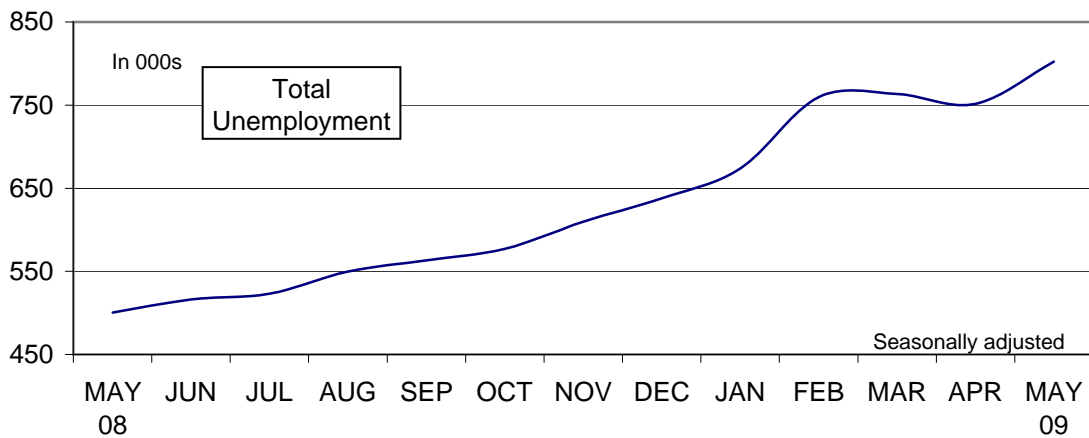
CHART 4: LABOR FORCE STATISTICS IN MAY 2009

In May...

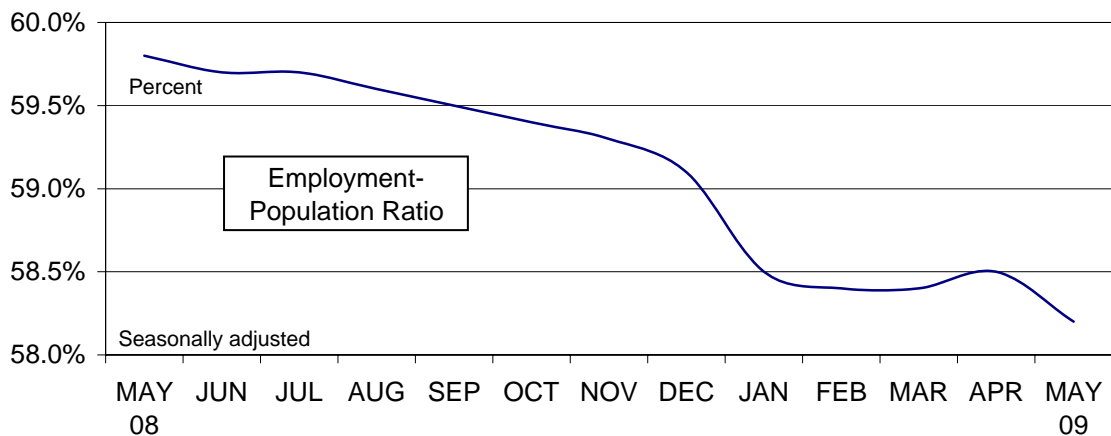
...NYS unemployment rate increased



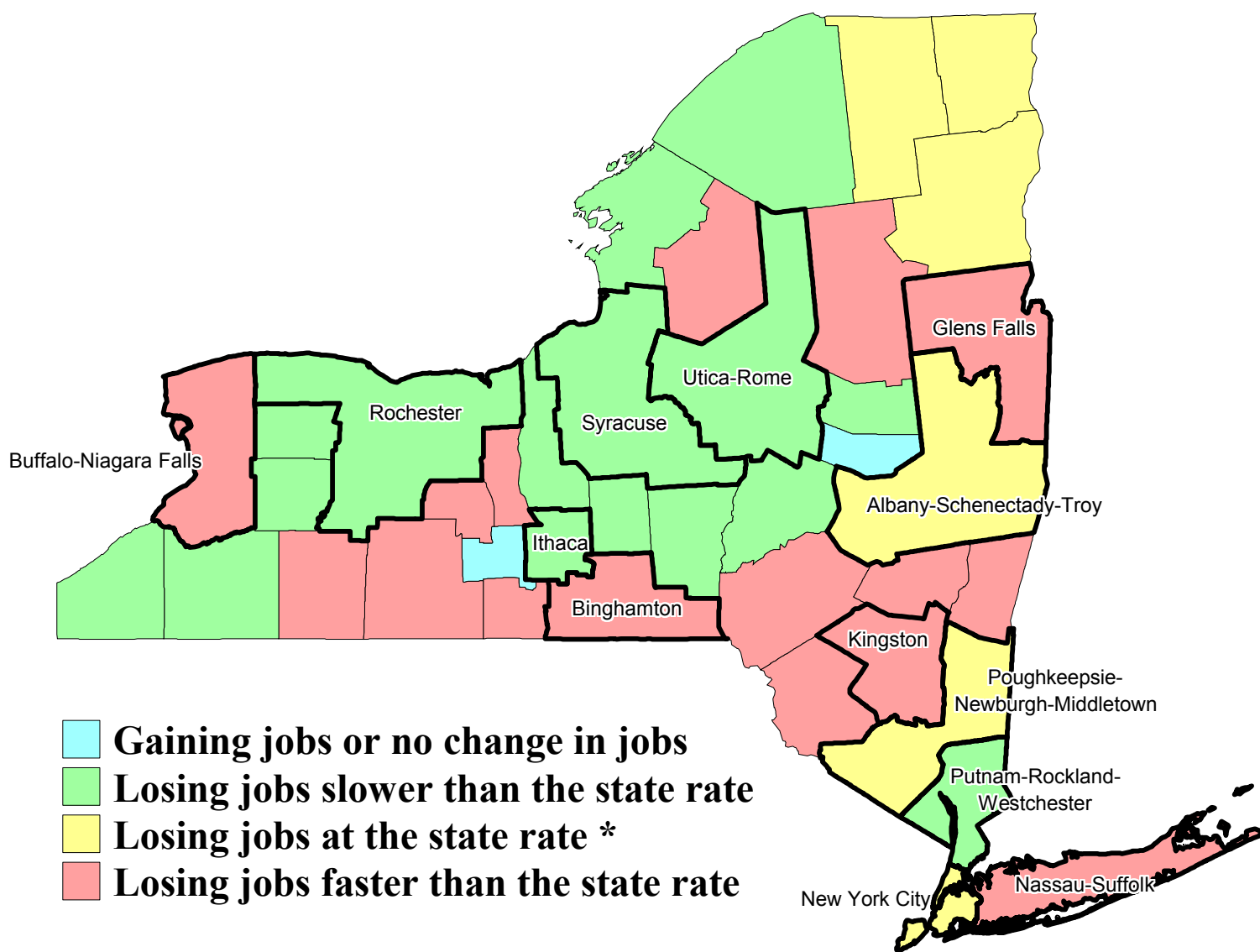
...NYS total unemployment increased



...NYS labor force participation decreased



Private Sector Job Growth by Area, New York State, May 2008 - May 2009



* Represents job loss of between -2.6% and -2.9% from May 2008 to May 2009

Unemployment Rates by County, New York State, May 2009

