

CHART 1: PRIVATE SECTOR JOB COUNT

(Seasonally Adjusted)
NEW YORK STATE
JANUARY 1990 - JANUARY 2009

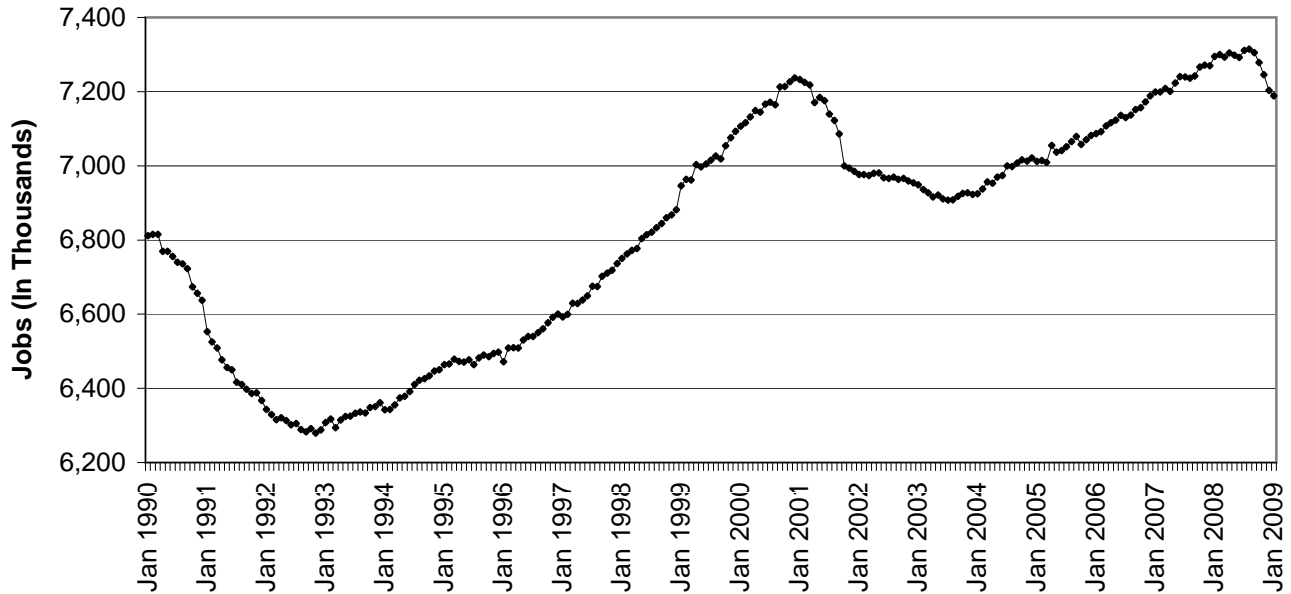
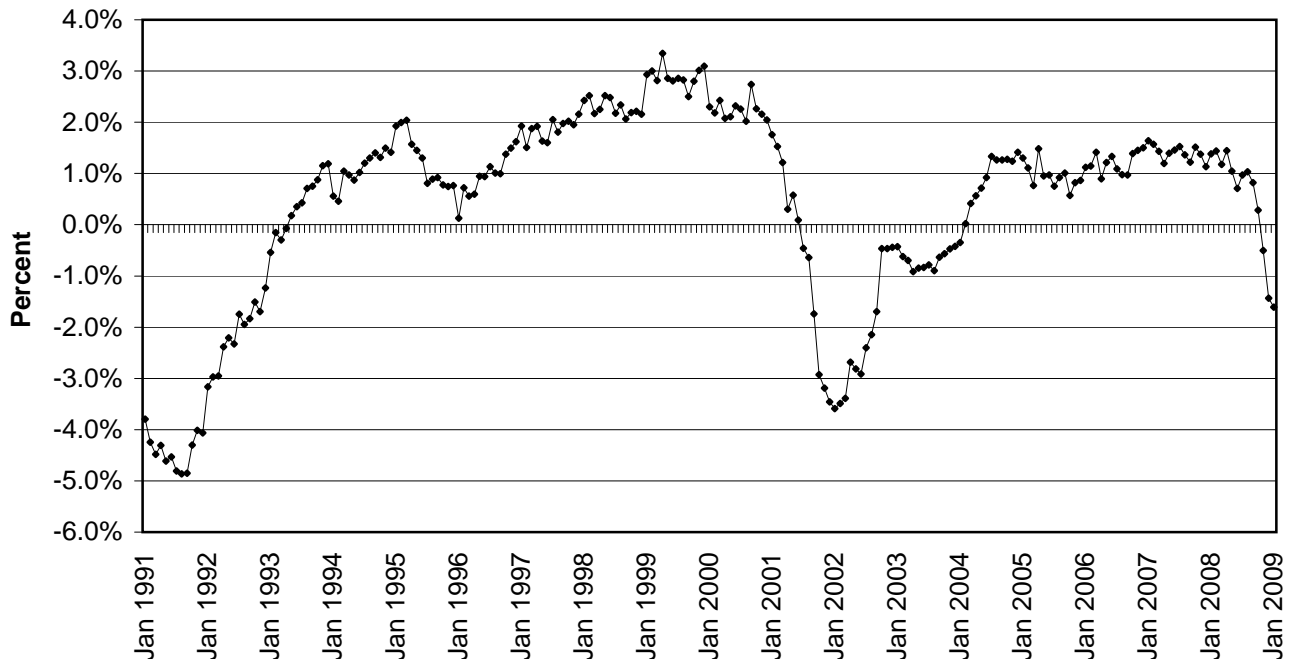


CHART 2: OVER-THE-YEAR CHANGE IN PRIVATE SECTOR JOBS

(Not Seasonally Adjusted)
NEW YORK STATE
JANUARY 1991 - JANUARY 2009



Note: The current private sector jobs series begins in January 1990; thus, over-the-year changes in the series start in January 1991.

CHART 3: OVER-THE-YEAR CHANGE IN NONFARM JOBS BY SUPERSECTOR
NEW YORK STATE
 (Not Seasonally Adjusted)
 JANUARY 2006-JANUARY 2007, JANUARY 2007-JANUARY 2008, JANUARY 2008-JANUARY 2009

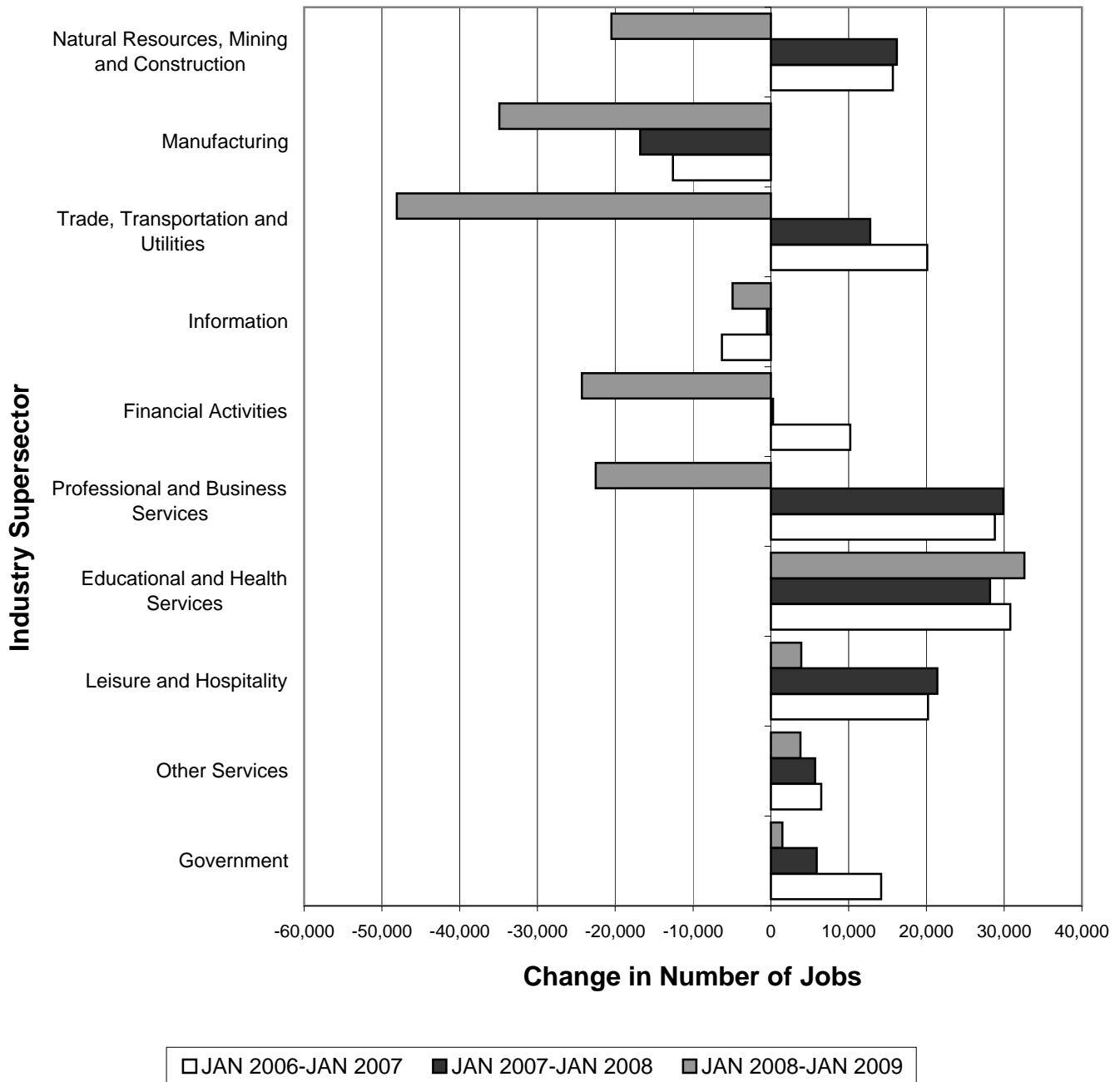
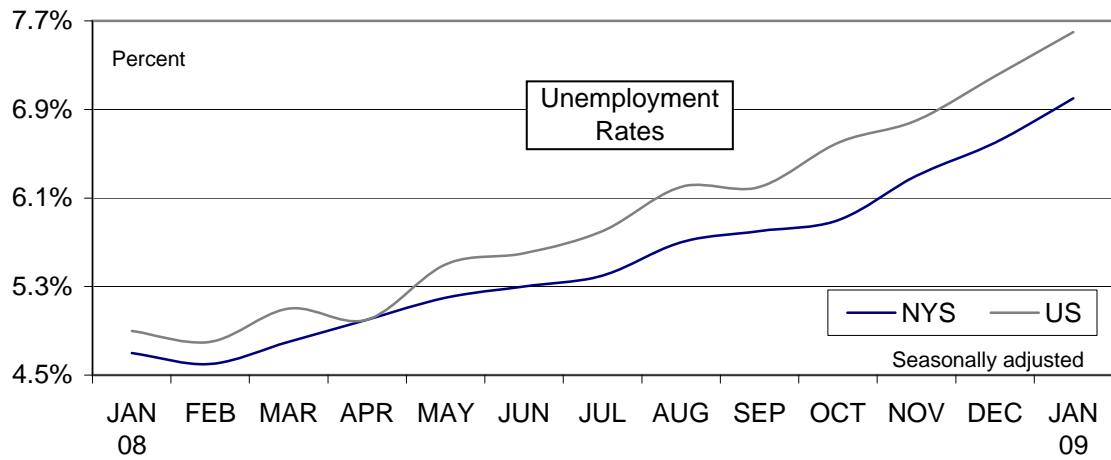


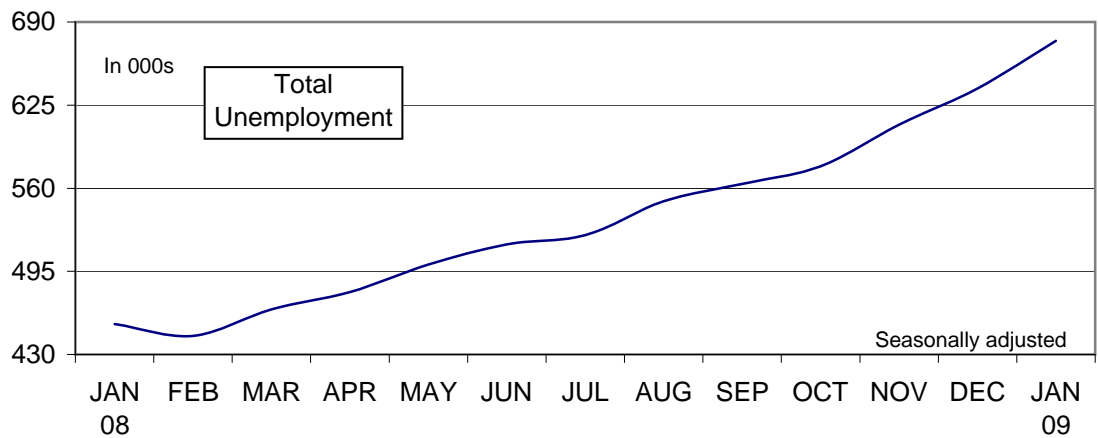
CHART 4: LABOR FORCE STATISTICS IN JANUARY 2009

In January...

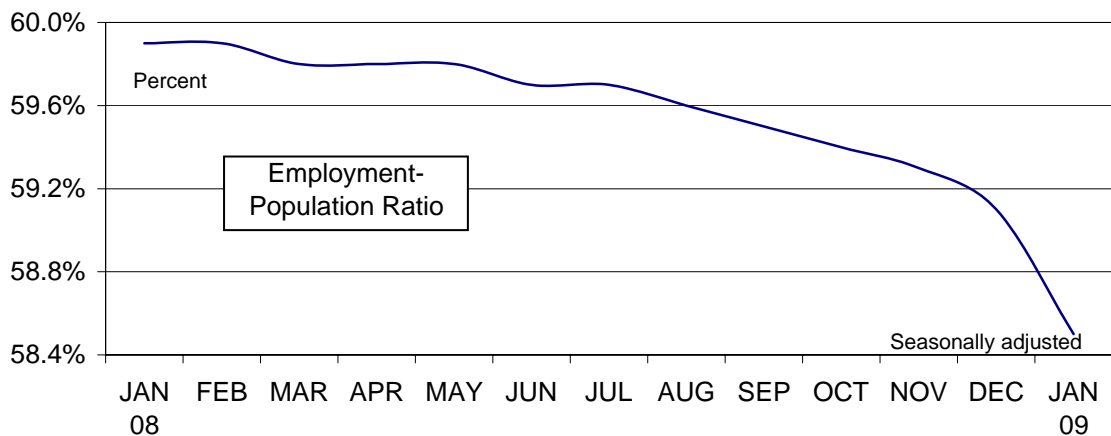
...NYS unemployment rate increased



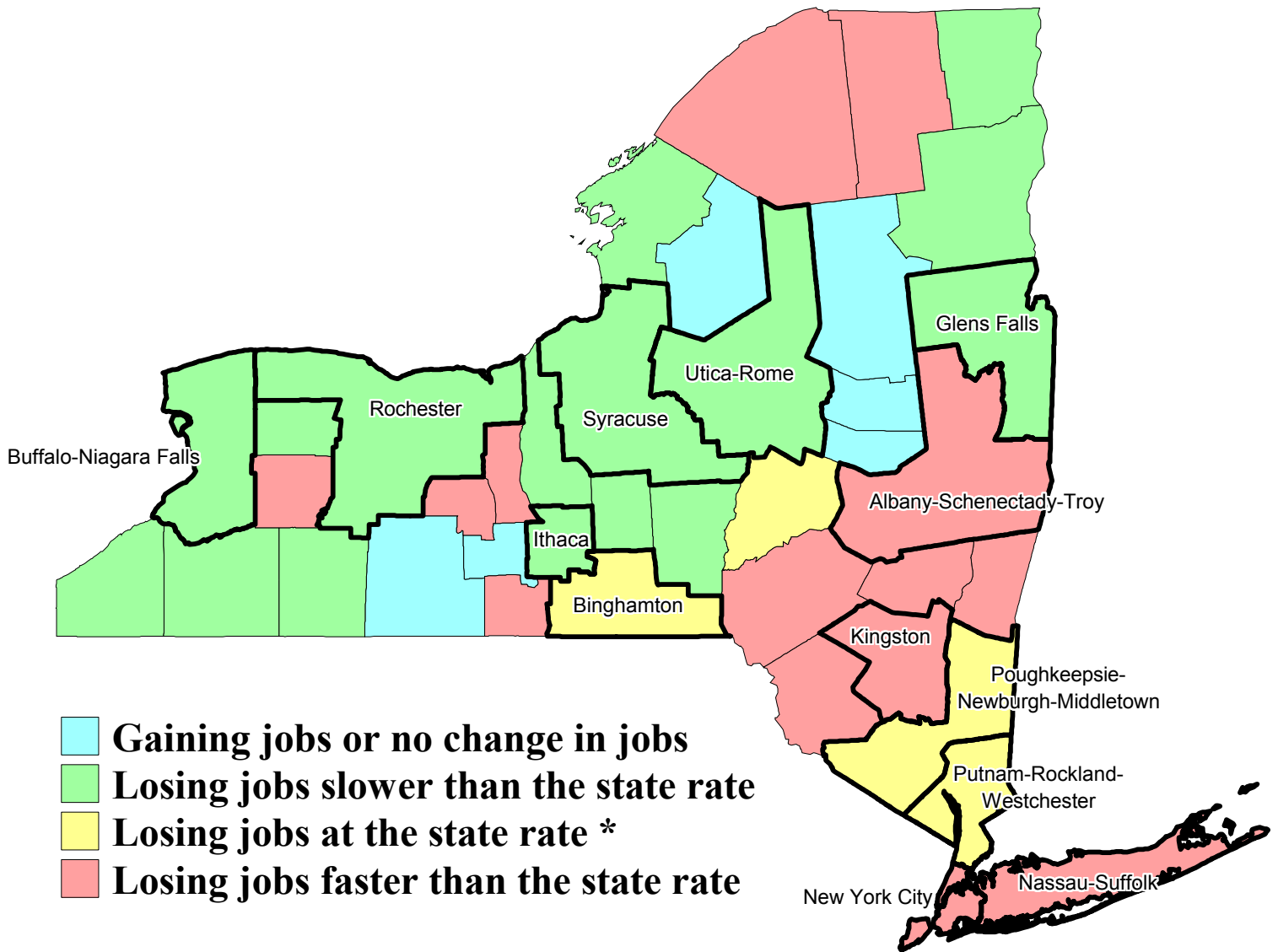
...NYS total unemployment increased



...NYS labor force participation decreased

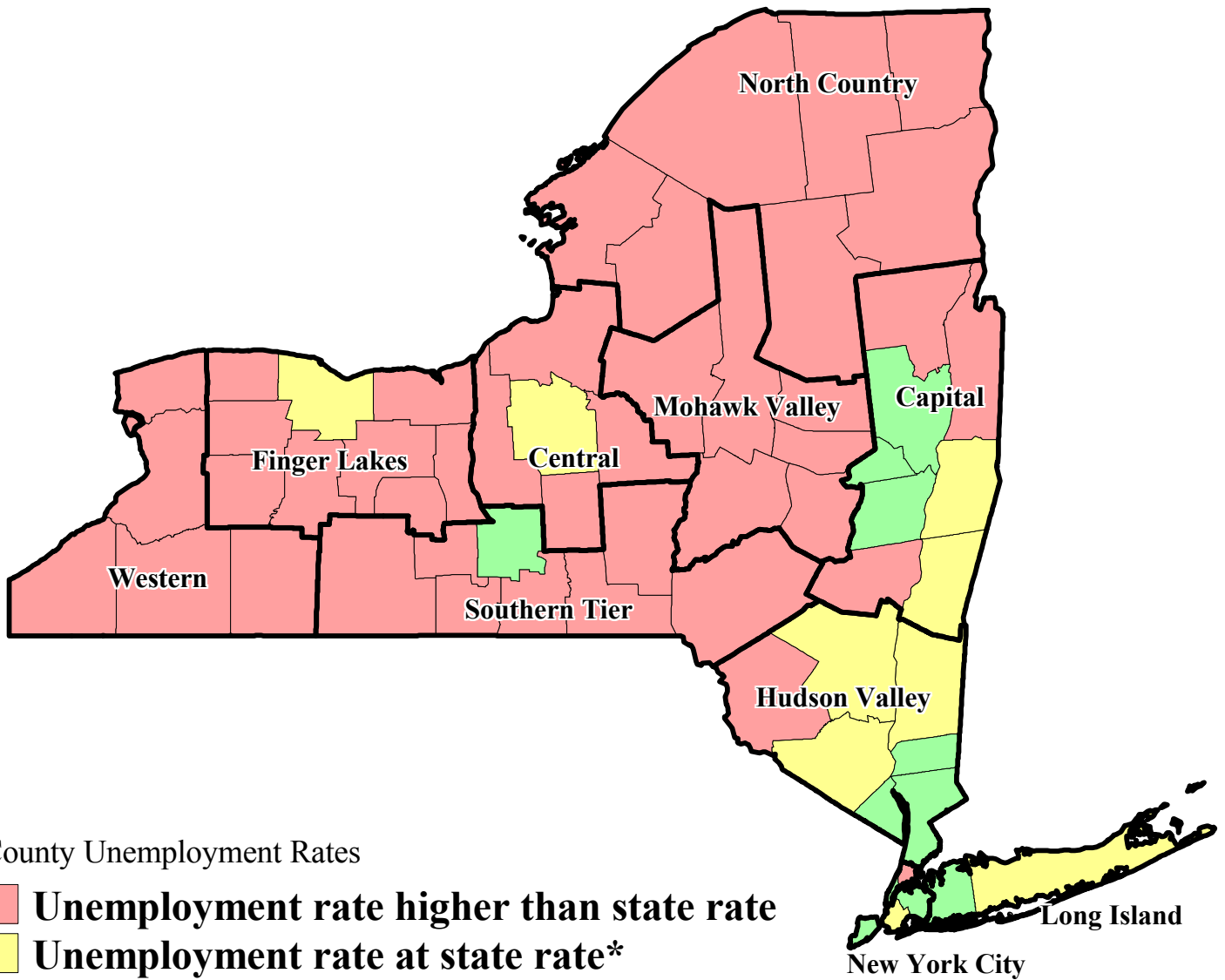


Private Sector Job Growth by Area, New York State, January 2008 - January 2009



* Represents job loss of between -1.5% and -1.7% from January 2008 to January 2009

Unemployment Rates by County, New York State, January 2009



County Unemployment Rates

- Unemployment rate higher than state rate
- Unemployment rate at state rate*
- Unemployment rate lower than state rate

* Represents unemployment rate of between 7.3% and 7.9% in January 2009