

CHART 1: PRIVATE SECTOR JOB COUNT

(Seasonally Adjusted)
NEW YORK STATE
JANUARY 1990 - APRIL 2009

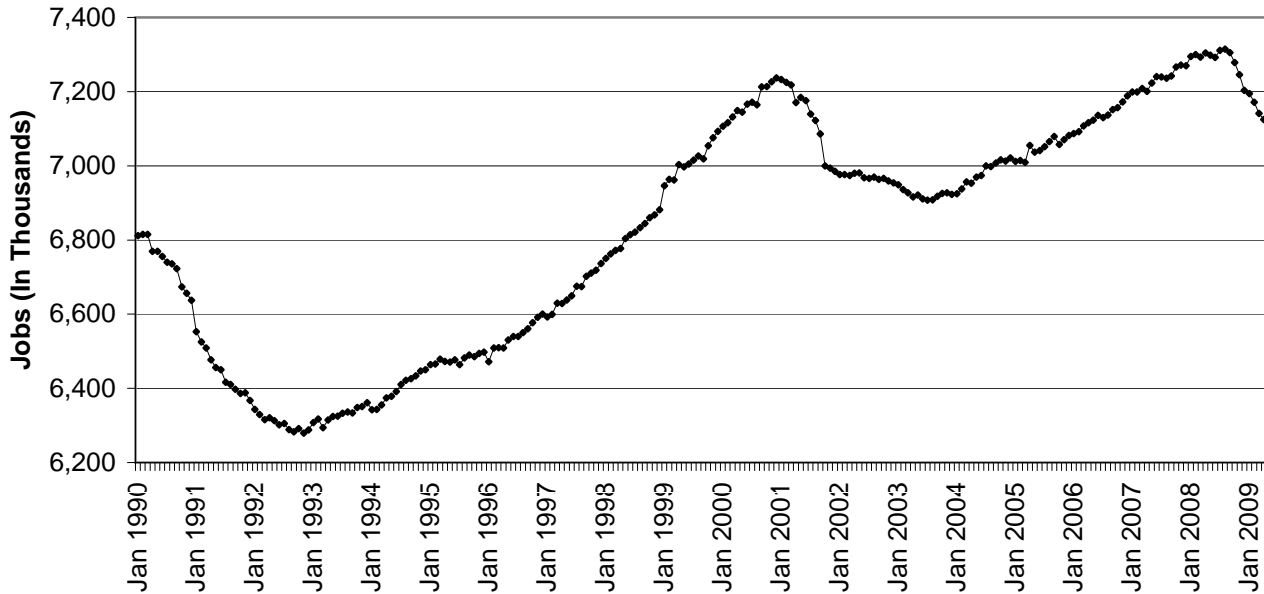
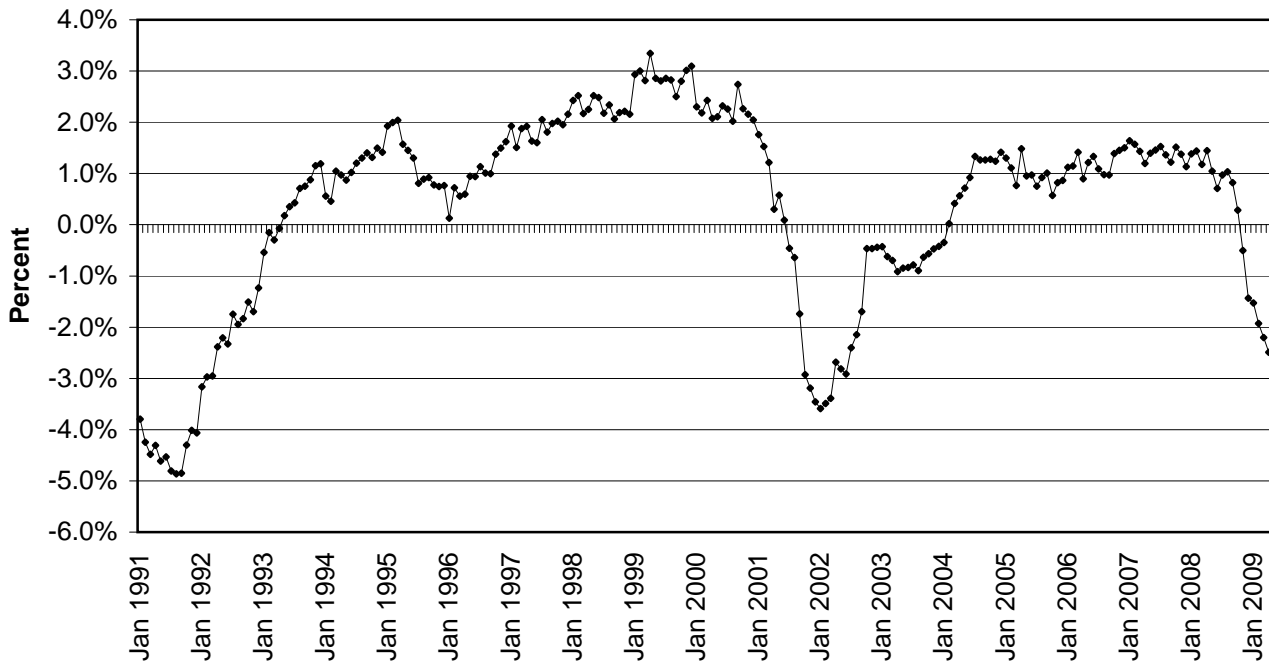


CHART 2: OVER-THE-YEAR CHANGE IN PRIVATE SECTOR JOBS

(Not Seasonally Adjusted)
NEW YORK STATE
JANUARY 1991 - APRIL 2009



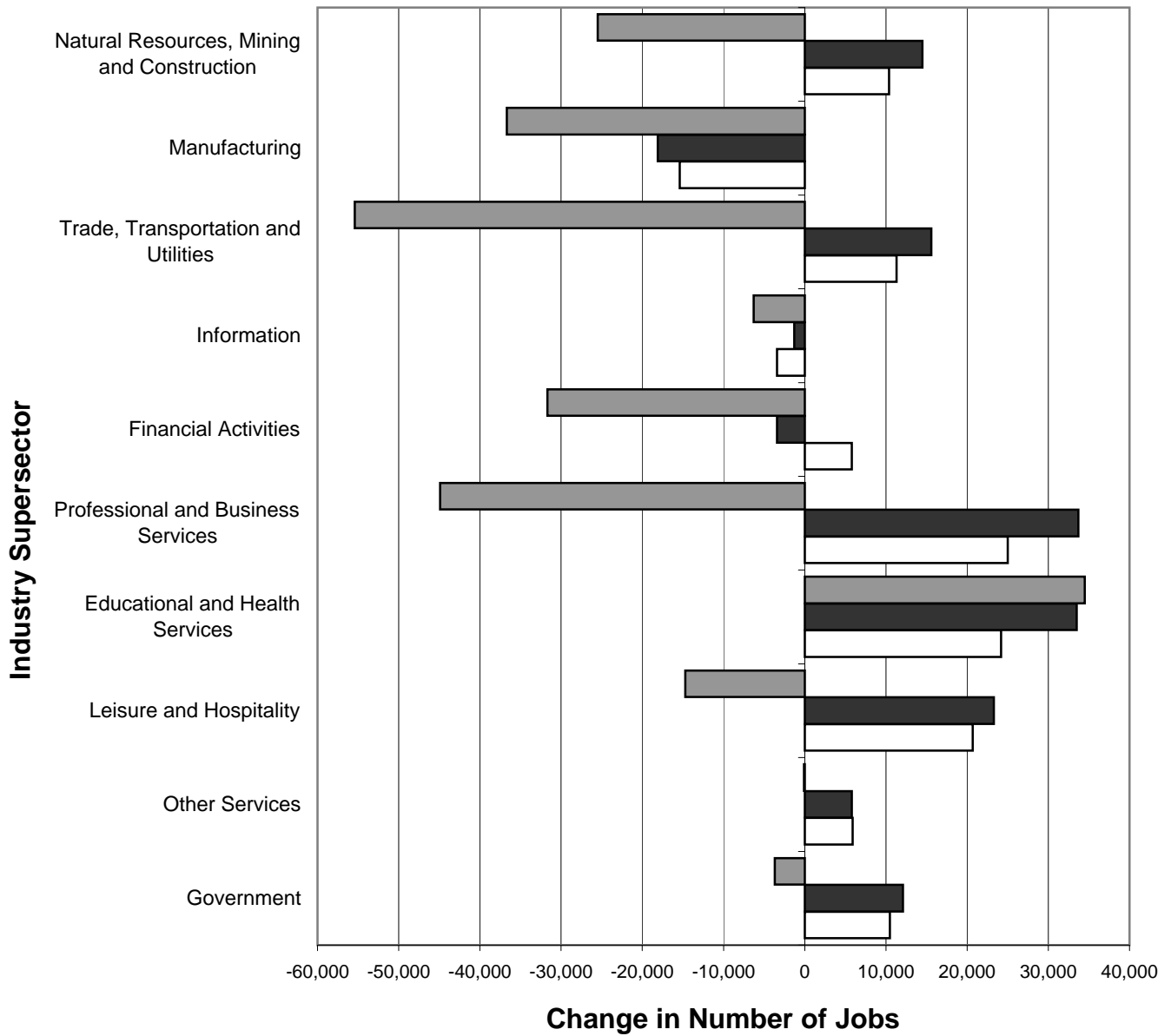
Note: The current private sector jobs series begins in January 1990; thus, over-the-year changes in the series start in January 1991.

CHART 3: OVER-THE-YEAR CHANGE IN NONFARM JOBS BY SUPERSECTOR

NEW YORK STATE

(Not Seasonally Adjusted)

APRIL 2006-APRIL 2007, APRIL 2007-APRIL 2008, APRIL 2008-APRIL 2009

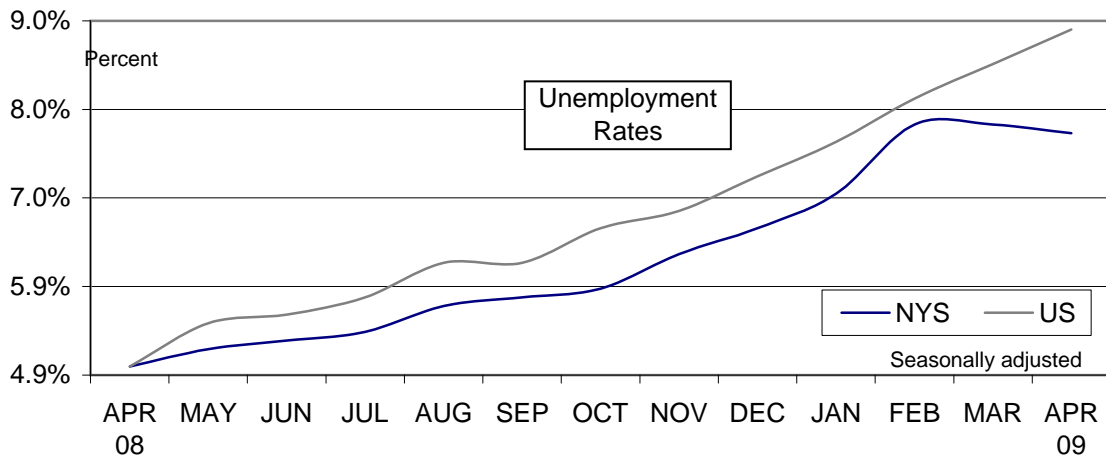


□ APR 2006-APR 2007 ■ APR 2007-APR 2008 ▒ APR 2008-APR 2009

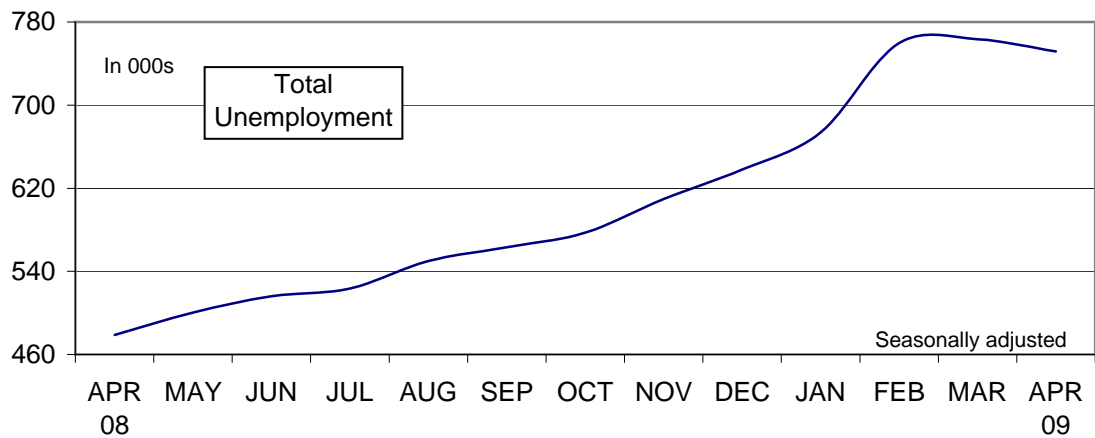
CHART 4: LABOR FORCE STATISTICS IN APRIL 2009

In April...

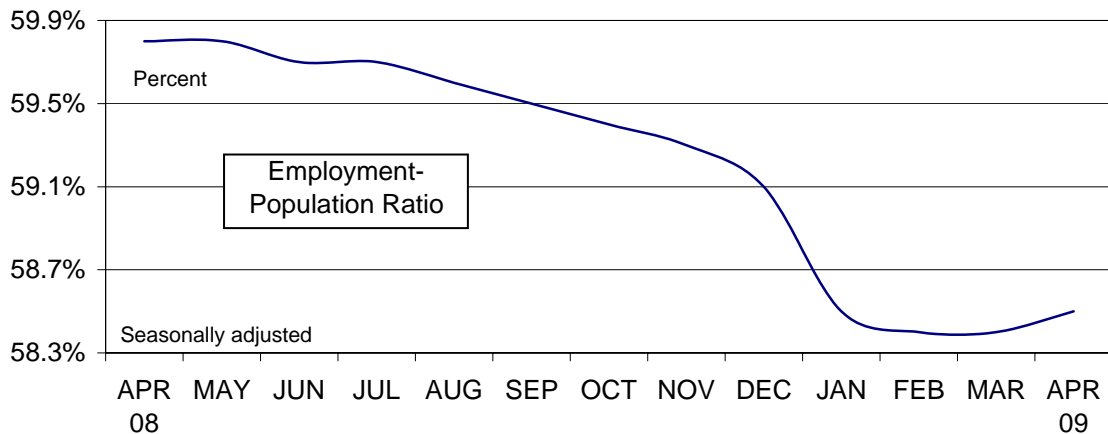
...NYS unemployment rate decreased



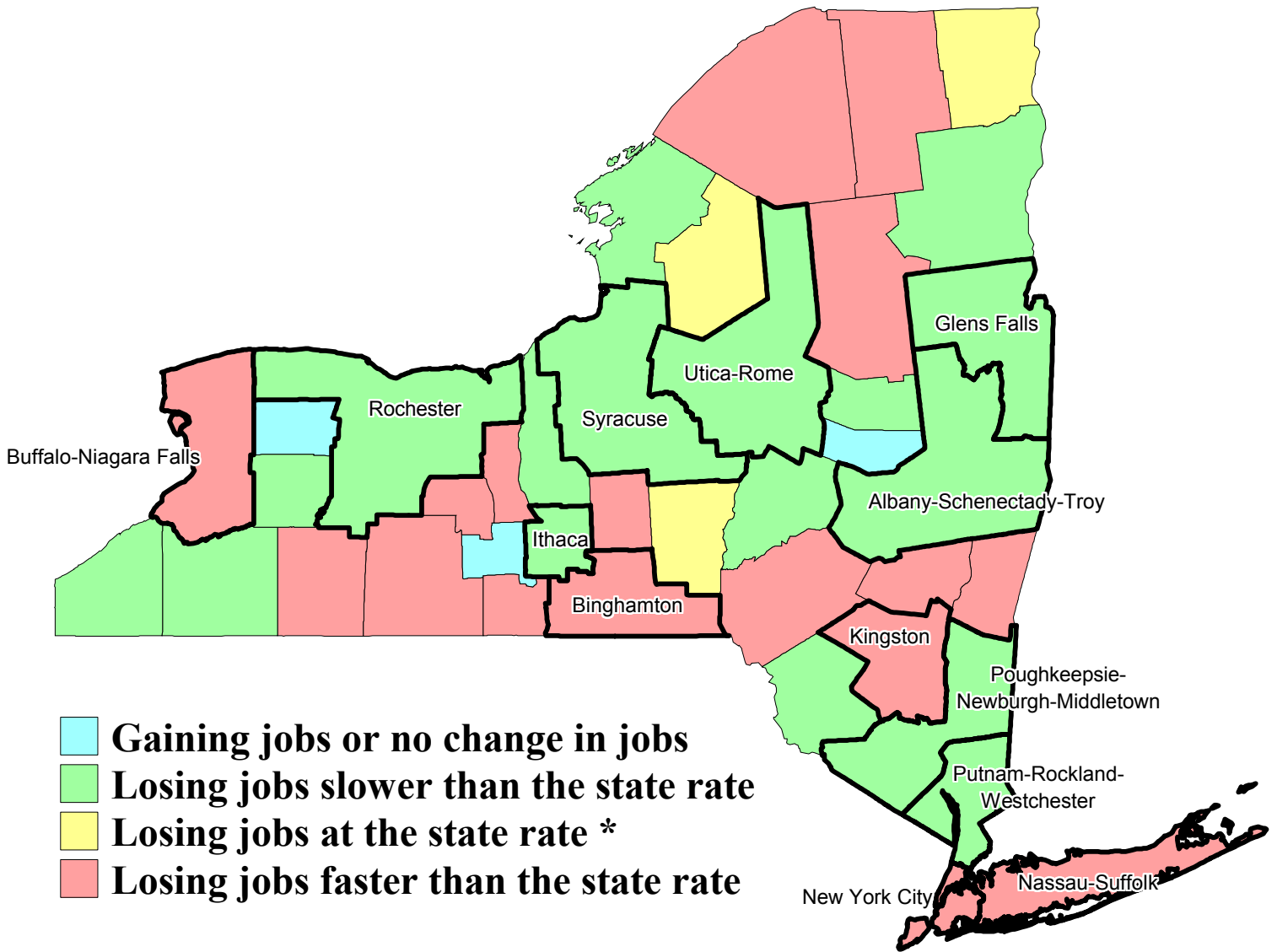
...NYS total unemployment decreased



...NYS labor force participation increased



Private Sector Job Growth by Area, New York State, April 2008 - April 2009



* Represents job loss of between -2.3% and -2.7%
from April 2008 to April 2009

Unemployment Rates by County, New York State, April 2009

