

CHART 1: PRIVATE SECTOR JOB COUNT

(Seasonally Adjusted)
NEW YORK STATE
JANUARY 1990 - OCTOBER 2009

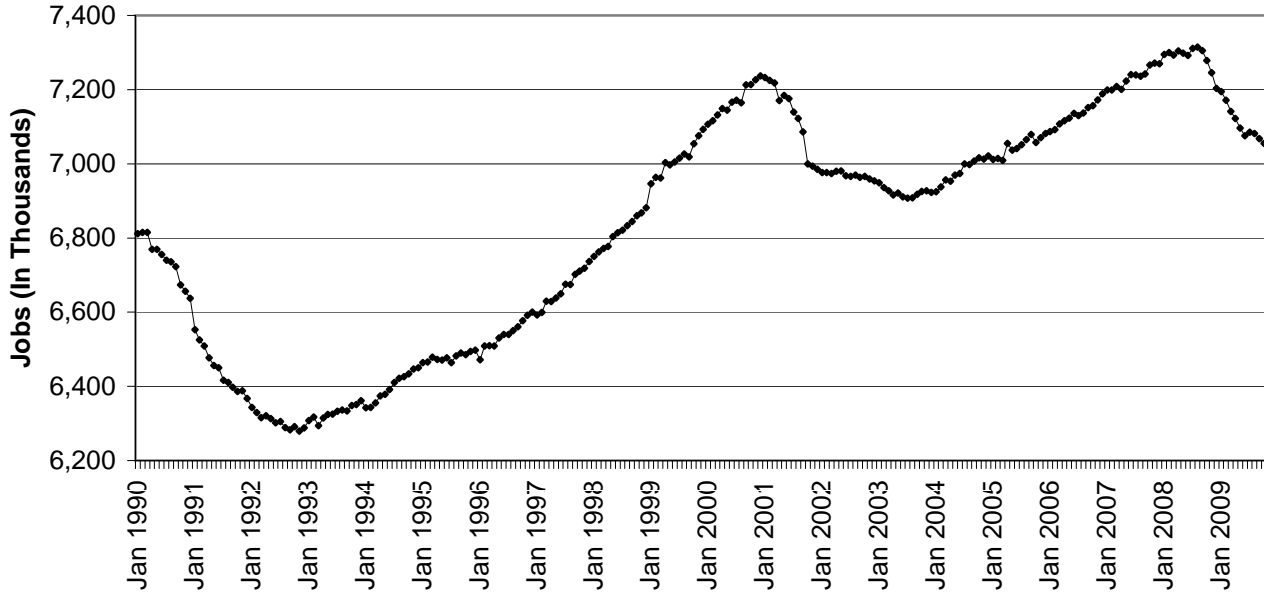
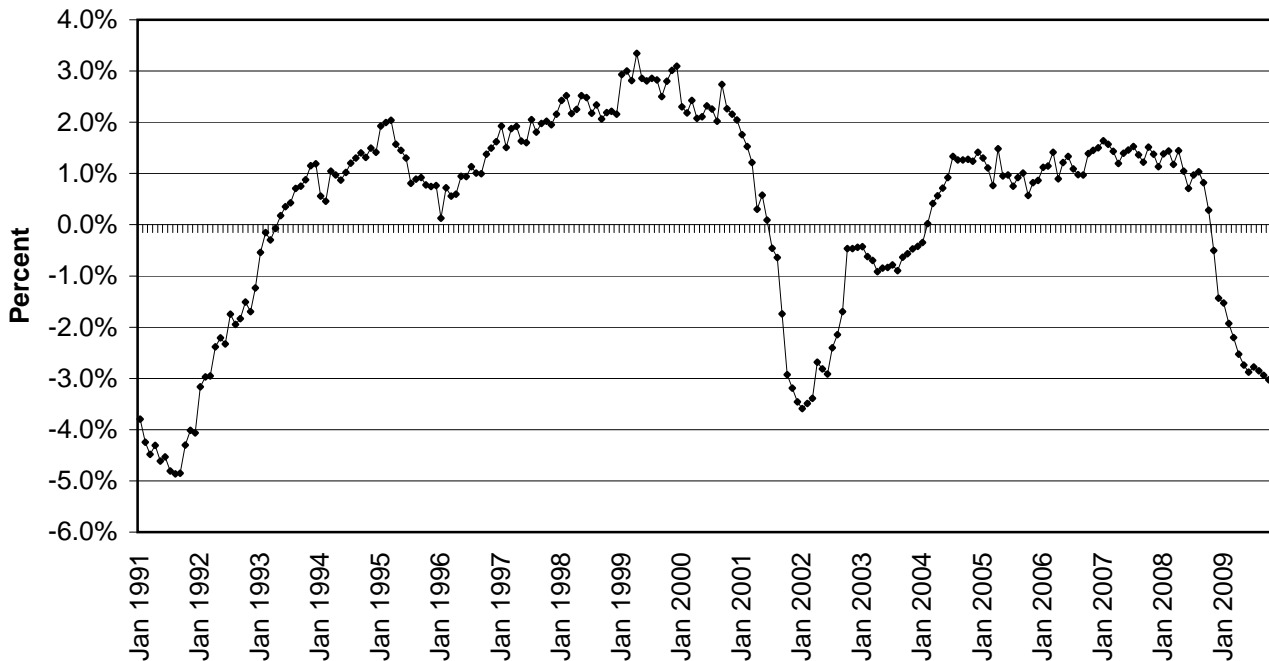


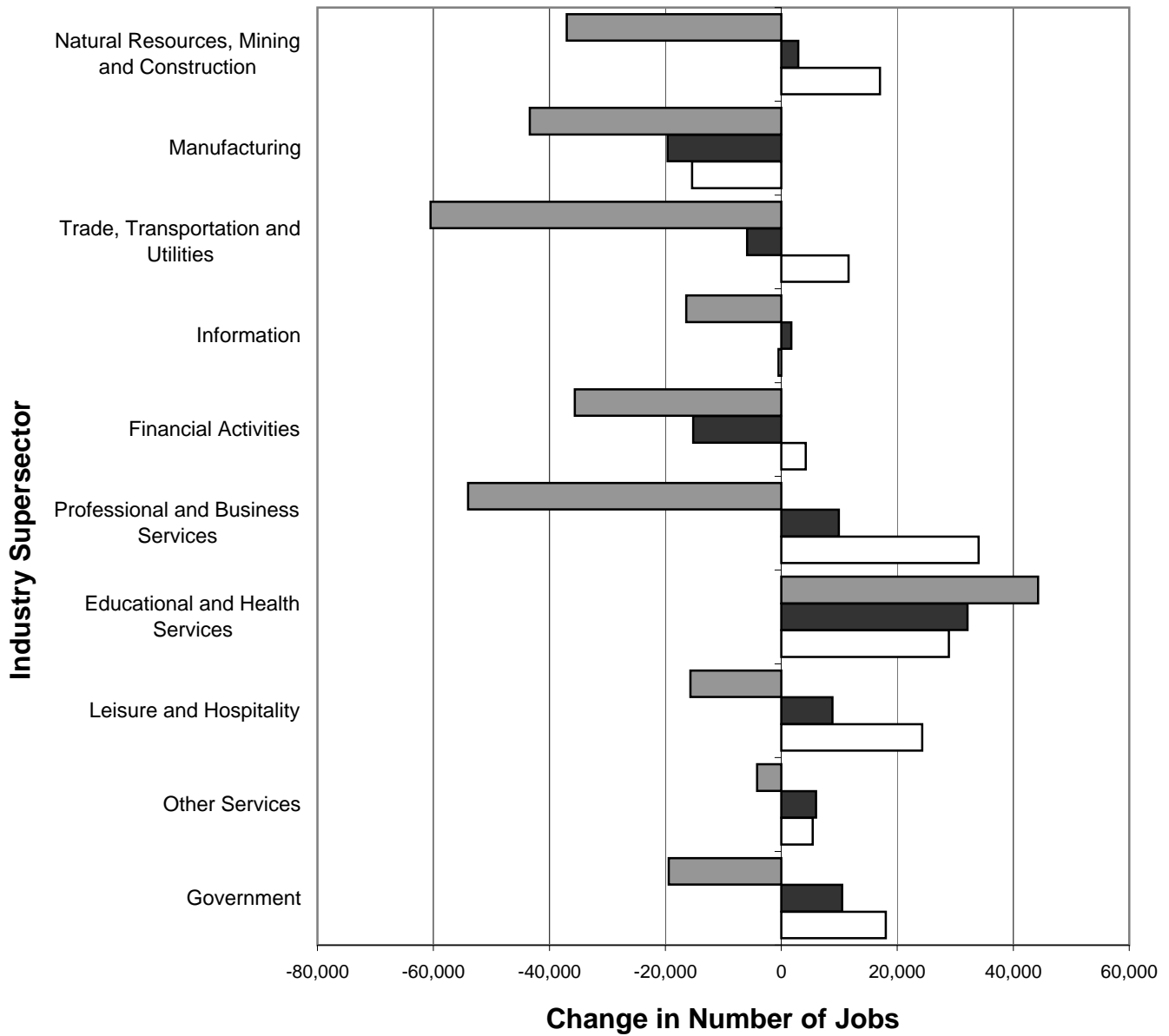
CHART 2: OVER-THE-YEAR CHANGE IN PRIVATE SECTOR JOBS

(Not Seasonally Adjusted)
NEW YORK STATE
JANUARY 1991 - OCTOBER 2009



Note: The current private sector jobs series begins in January 1990; thus, over-the-year changes in the series start in January 1991.

CHART 3: OVER-THE-YEAR CHANGE IN NONFARM JOBS BY SUPERSECTOR
NEW YORK STATE
 (Not Seasonally Adjusted)
 OCTOBER 2006-OCTOBER 2007, OCTOBER 2007-OCTOBER 2008, OCTOBER 2008-OCTOBER 2009

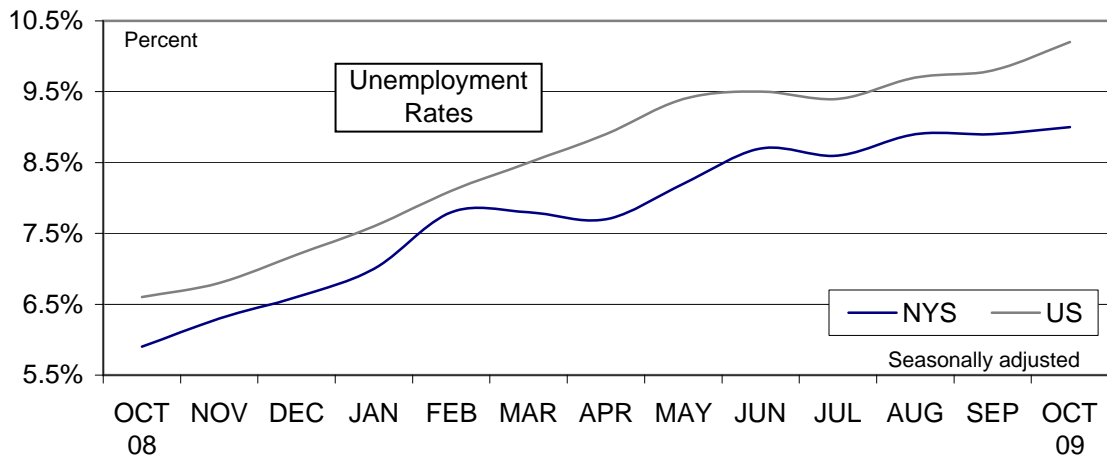


□ OCT 2006-OCT 2007 ■ OCT 2007-OCT 2008 ▒ OCT 2008-OCT 2009

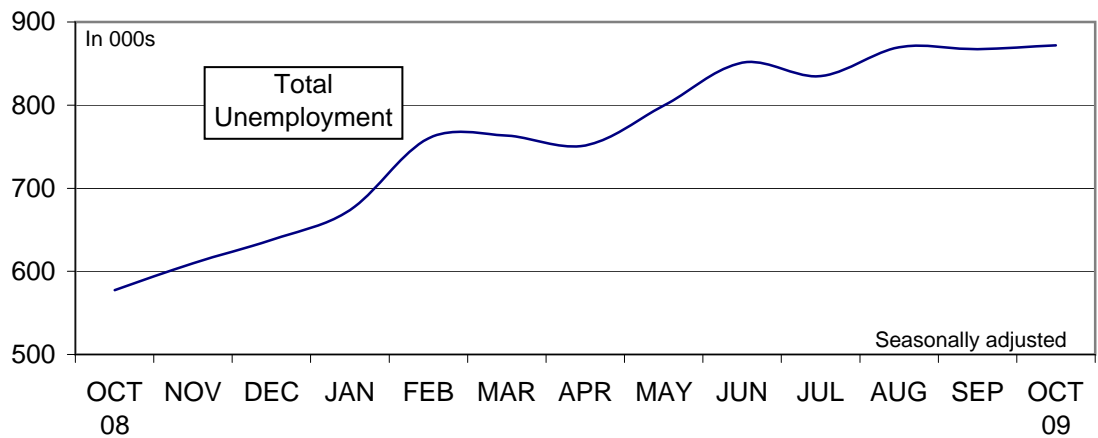
CHART 4: LABOR FORCE STATISTICS IN OCTOBER 2009

In October...

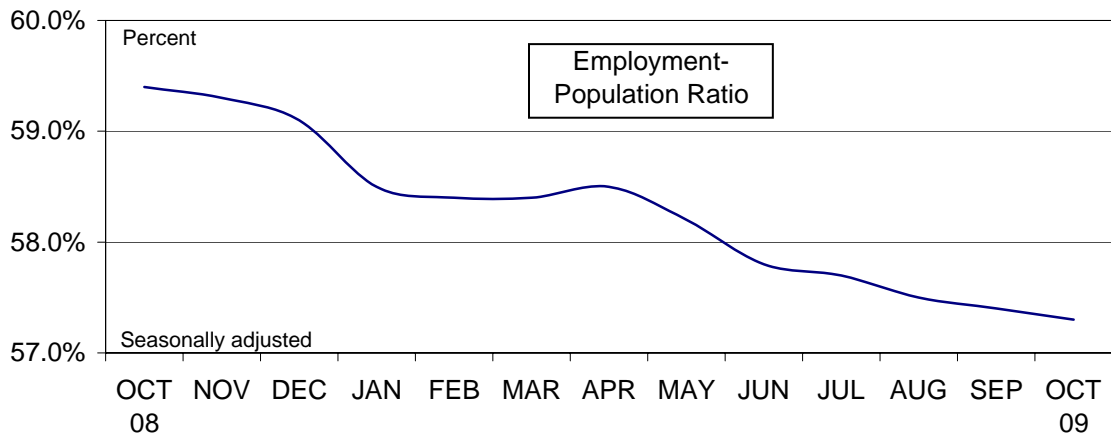
...NYS unemployment rate increased



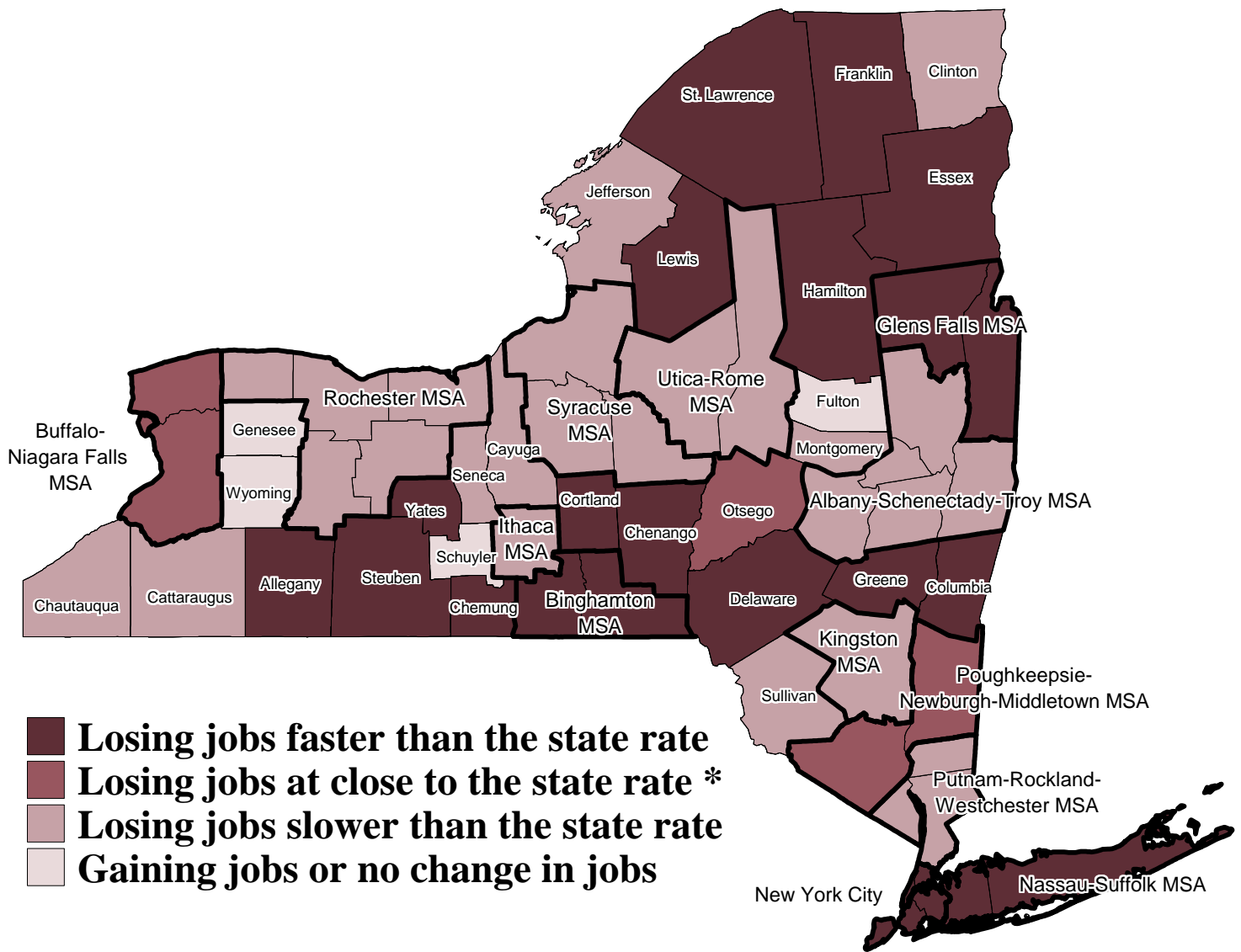
...NYS total unemployment increased



...NYS labor force participation decreased



Percent Change in Private Sector Jobs by Area, New York State, October 2008 - October 2009



* Represents job loss of between -2.8% and -3.2% from October 2008 to October 2009.

Unemployment Rates by County, New York State, October 2009

