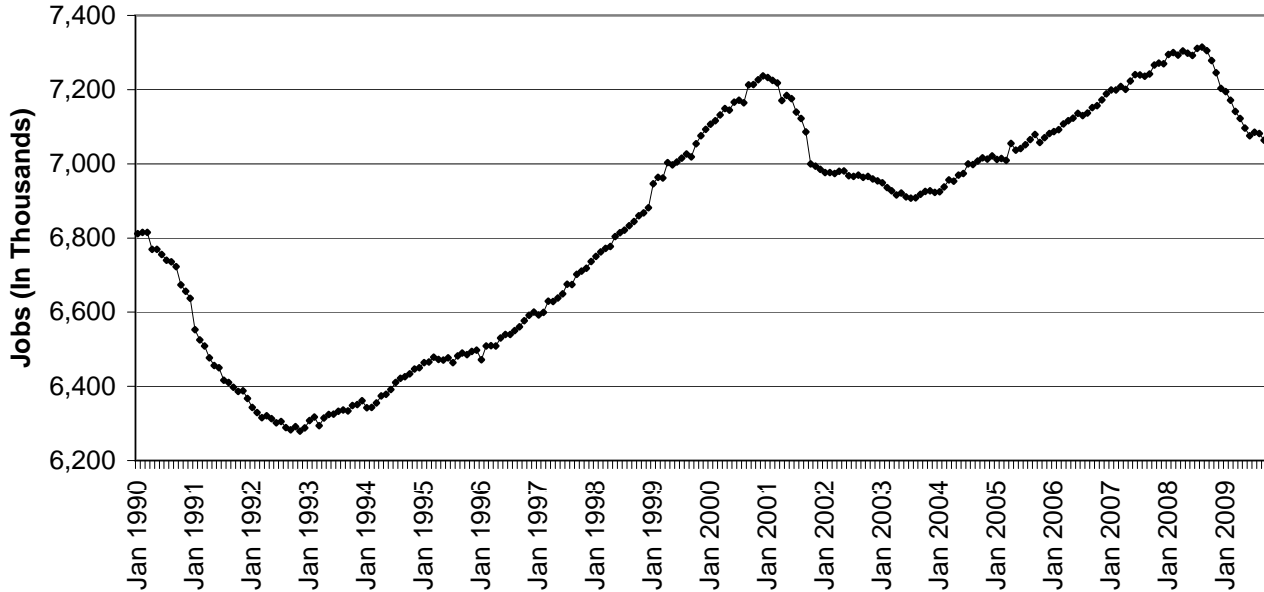


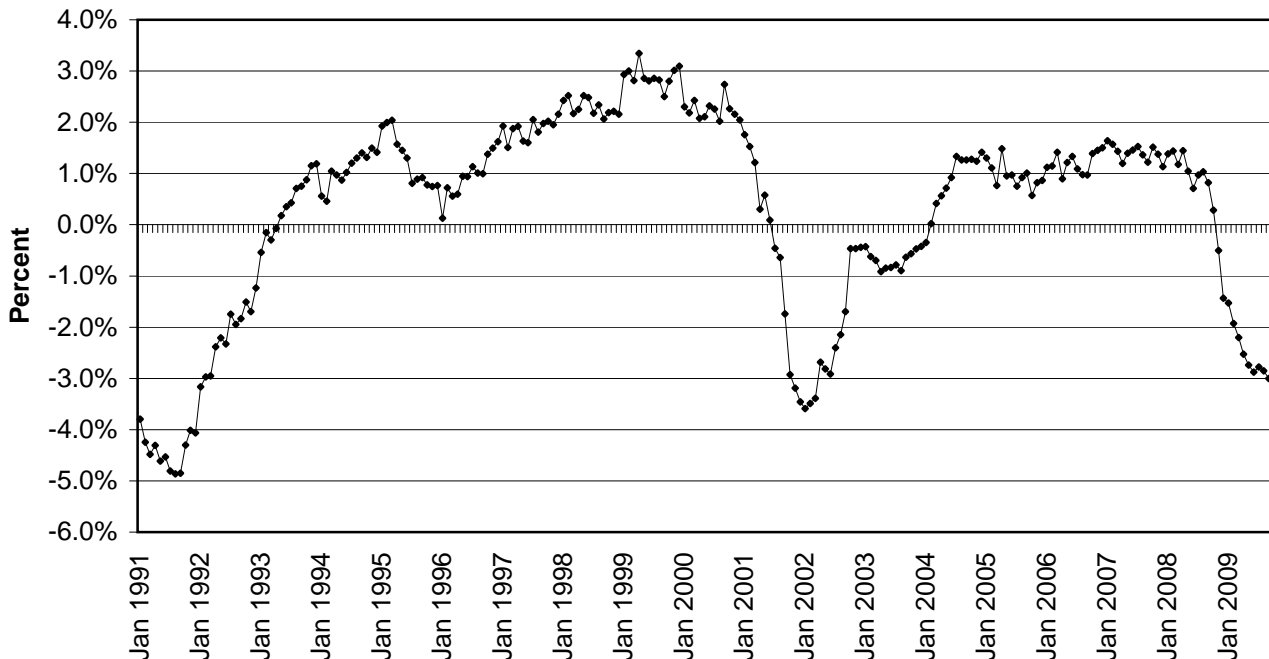
### CHART 1: PRIVATE SECTOR JOB COUNT

(Seasonally Adjusted)  
NEW YORK STATE  
JANUARY 1990 - SEPTEMBER 2009



### CHART 2: OVER-THE-YEAR CHANGE IN PRIVATE SECTOR JOBS

(Not Seasonally Adjusted)  
NEW YORK STATE  
JANUARY 1991 - SEPTEMBER 2009



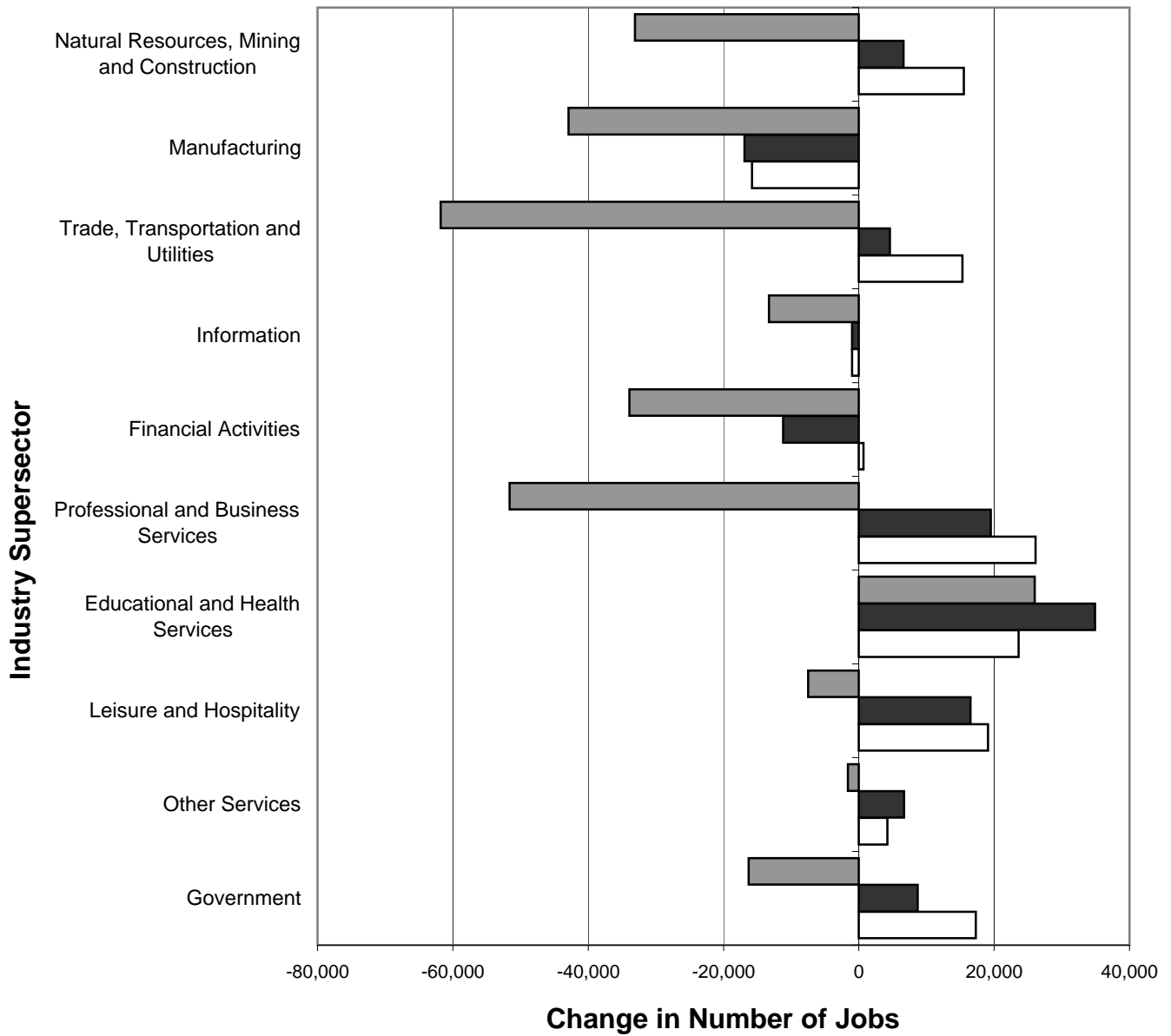
Note: The current private sector jobs series begins in January 1990; thus, over-the-year changes in the series start in January 1991.

### CHART 3: OVER-THE-YEAR CHANGE IN NONFARM JOBS BY SUPERSECTOR

NEW YORK STATE

(Not Seasonally Adjusted)

SEPTEMBER 2006-SEPTEMBER 2007, SEPTEMBER 2007-SEPTEMBER 2008, SEPTEMBER 2008-SEPTEMBER 2009

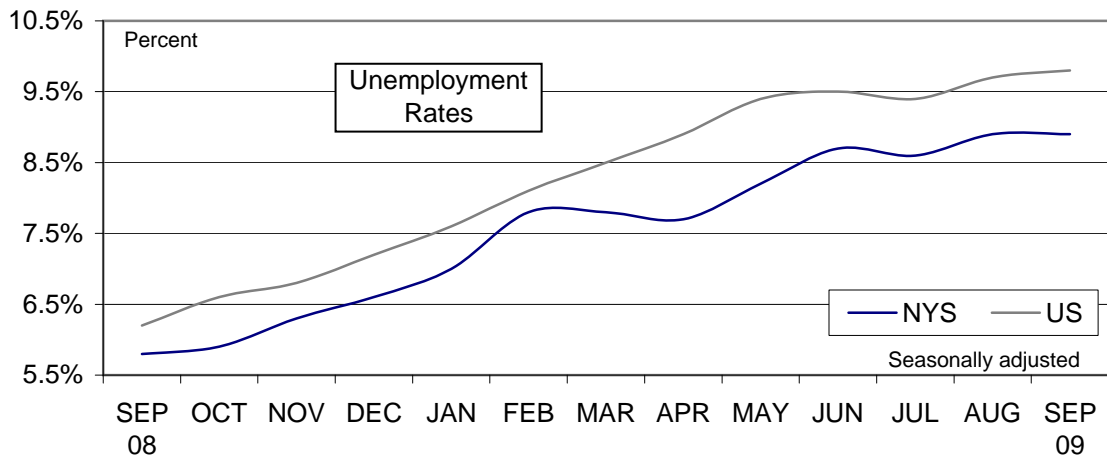


□ SEP 2006-SEP 2007 ■ SEP 2007-SEP 2008 ▒ SEP 2008-SEP 2009

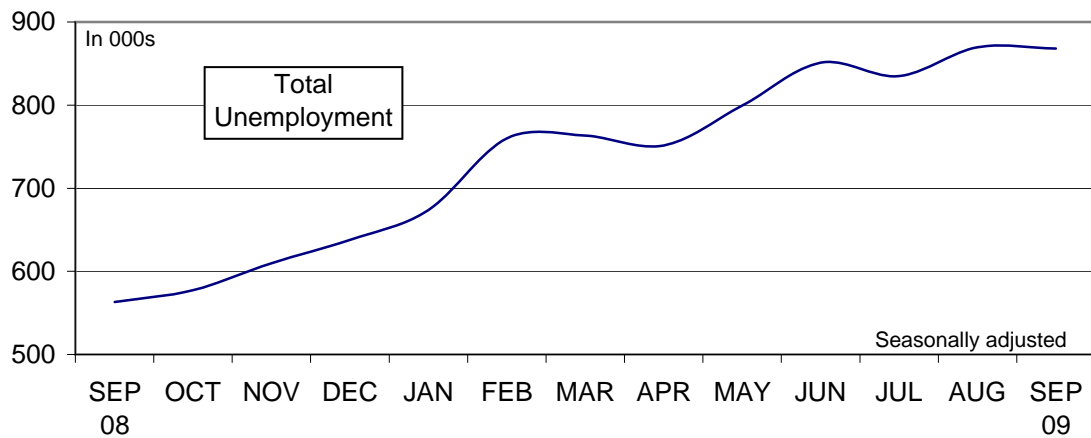
## CHART 4: LABOR FORCE STATISTICS IN SEPTEMBER 2009

In September...

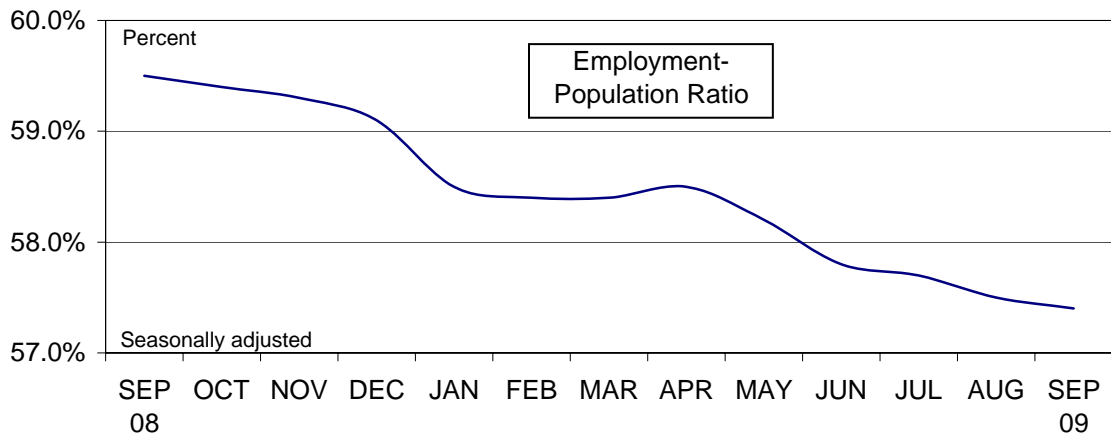
...NYS unemployment rate remained the same



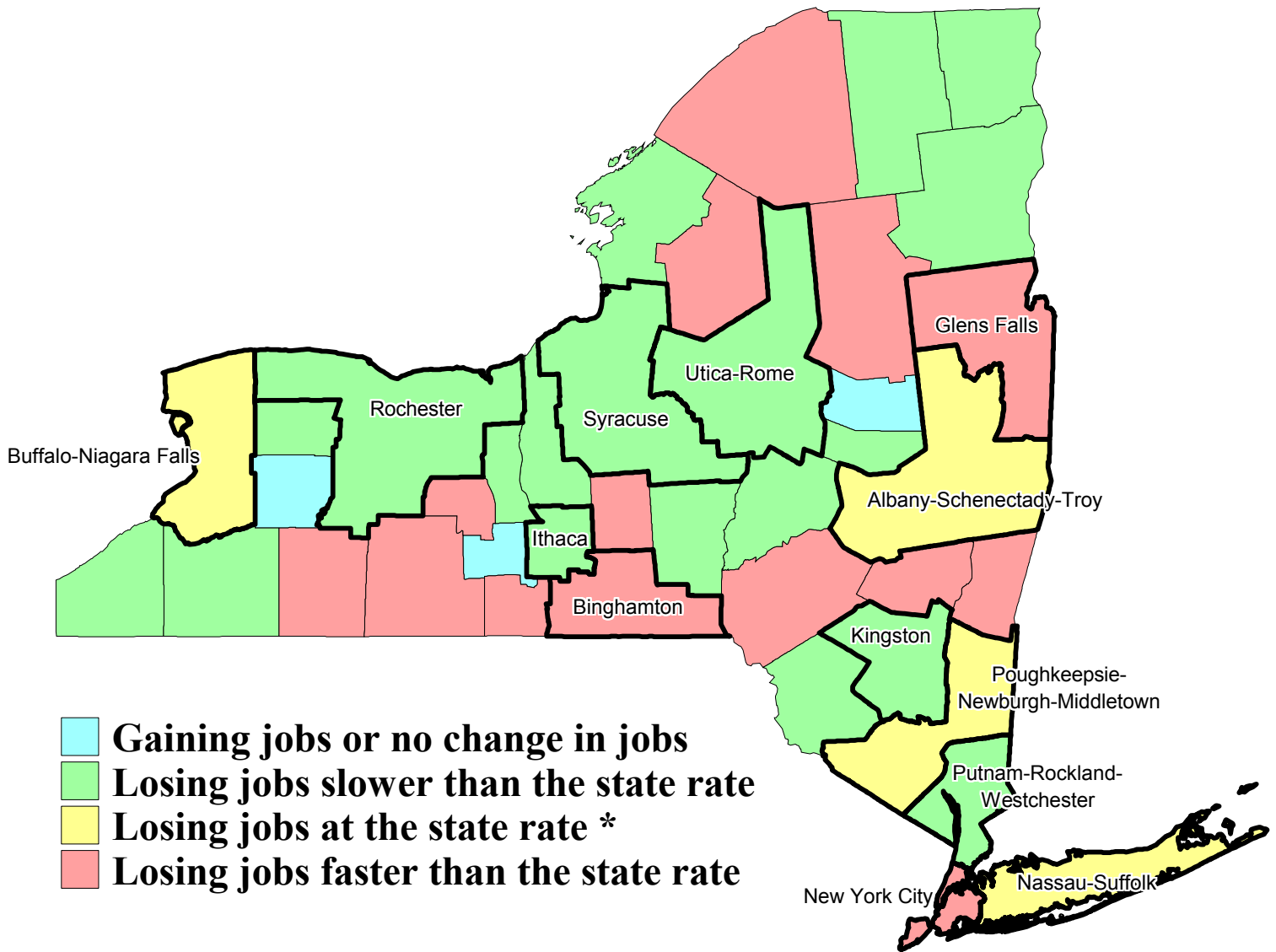
...NYS total unemployment decreased



...NYS labor force participation decreased



# Private Sector Job Growth by Area, New York State, September 2008 - September 2009



\* Represents job loss of between -2.8% and -3.2% from September 2008 to September 2009.

# Unemployment Rates by County, New York State, September 2009

