

CHART 1: PRIVATE SECTOR JOB COUNT

(Seasonally Adjusted)
NEW YORK STATE
JANUARY 1990 - AUGUST 2009

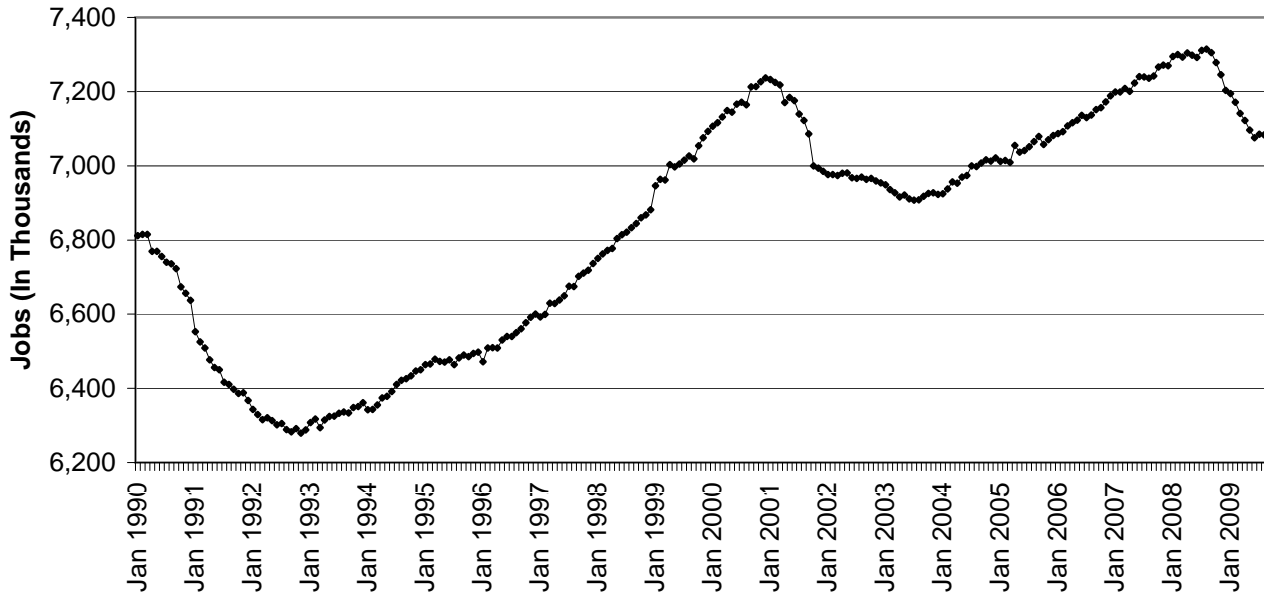
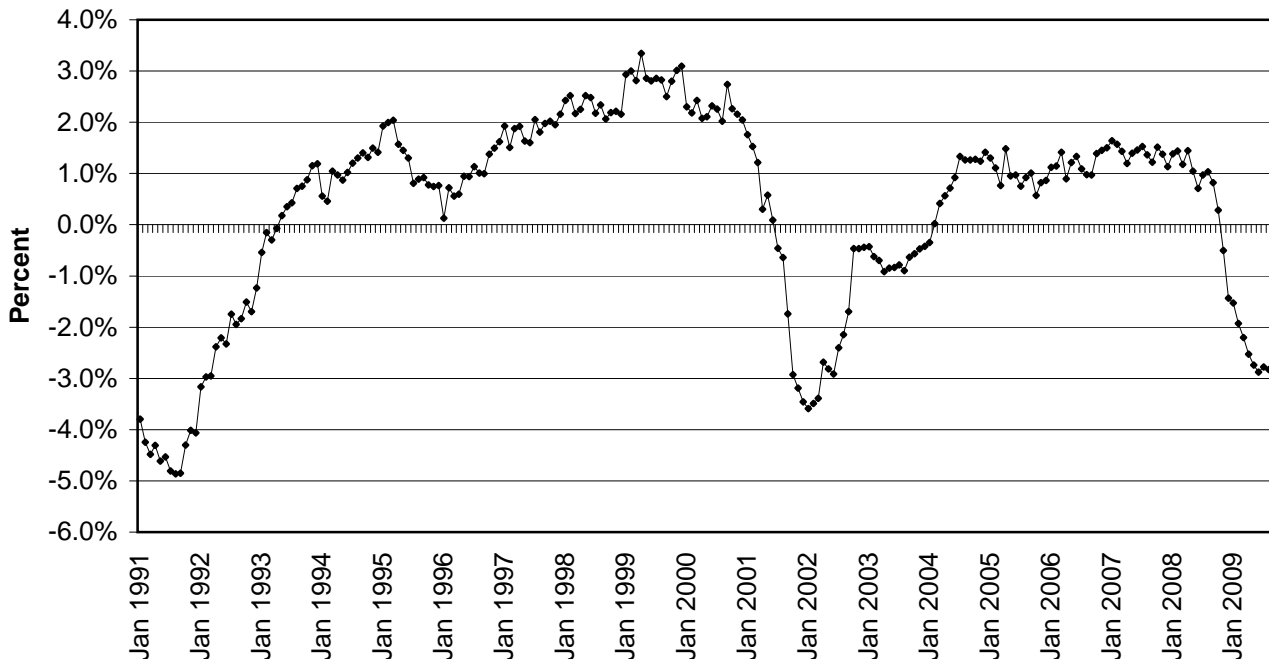


CHART 2: OVER-THE-YEAR CHANGE IN PRIVATE SECTOR JOBS

(Not Seasonally Adjusted)
NEW YORK STATE
JANUARY 1991 - AUGUST 2009



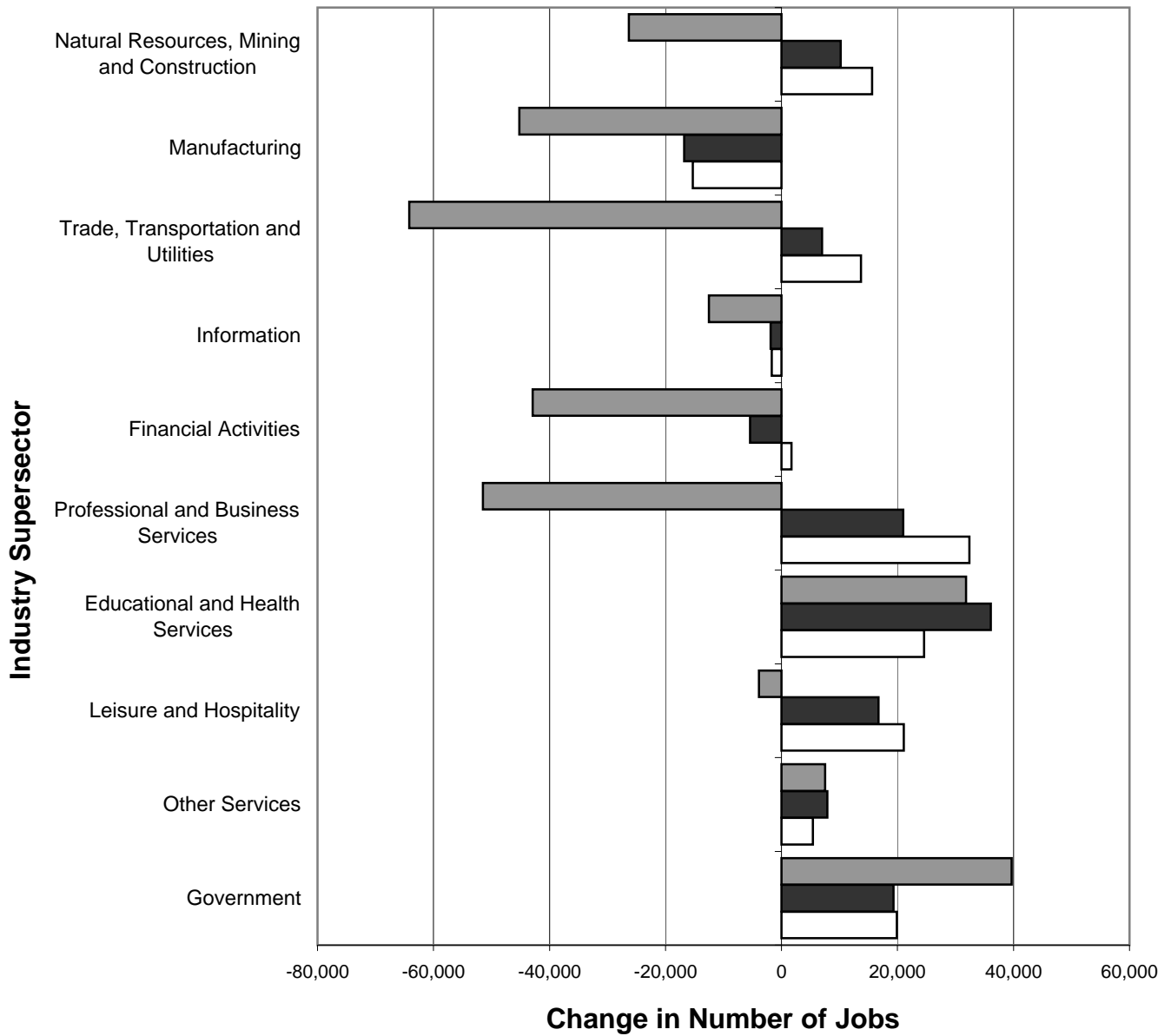
Note: The current private sector jobs series begins in January 1990; thus, over-the-year changes in the series start in January 1991.

CHART 3: OVER-THE-YEAR CHANGE IN NONFARM JOBS BY SUPERSECTOR

NEW YORK STATE

(Not Seasonally Adjusted)

AUGUST 2006-AUGUST 2007, AUGUST 2007-AUGUST 2008, AUGUST 2008-AUGUST 2009

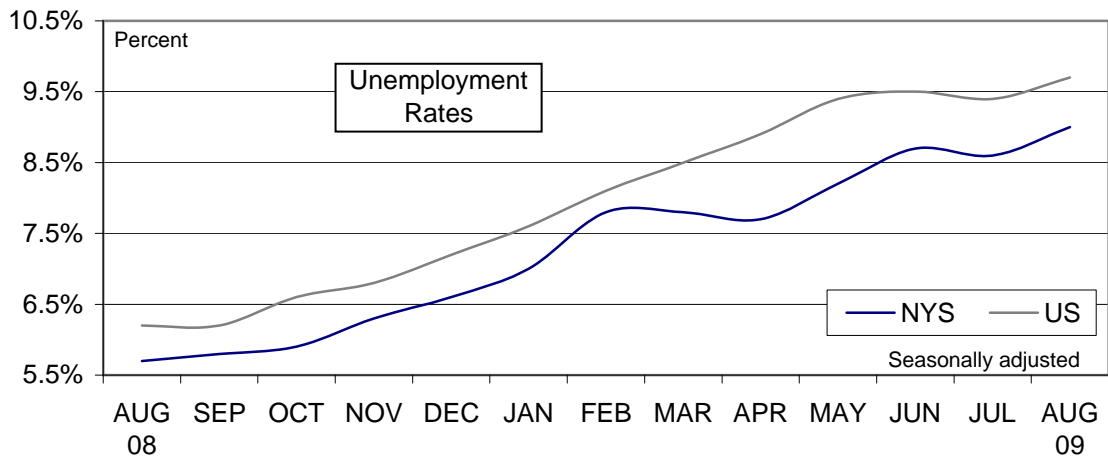


□ AUG 2006-AUG 2007 ■ AUG 2007-AUG 2008 ▒ AUG 2008-AUG 2009

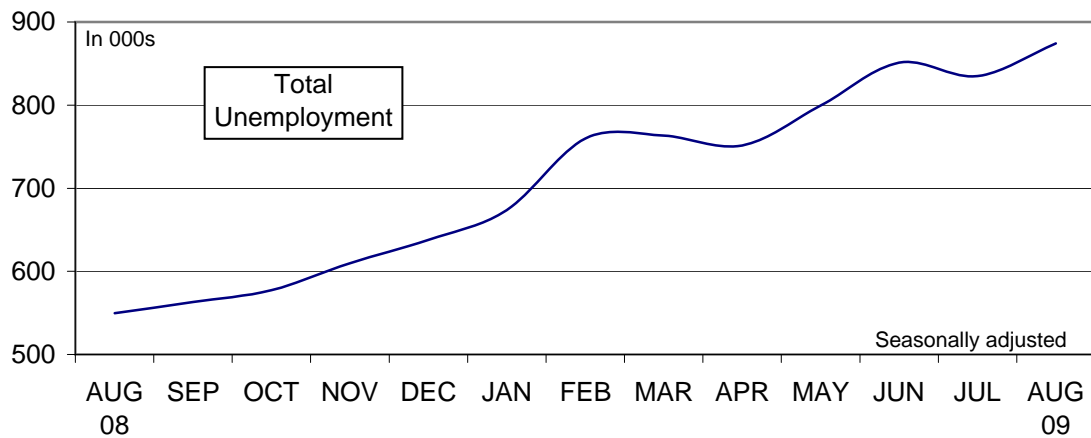
CHART 4: LABOR FORCE STATISTICS IN AUGUST 2009

In August...

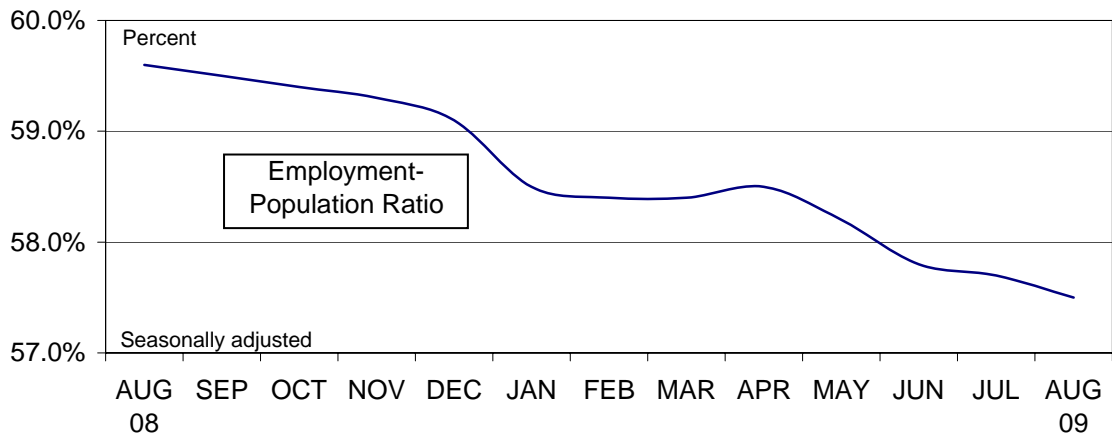
...NYS unemployment rate increased



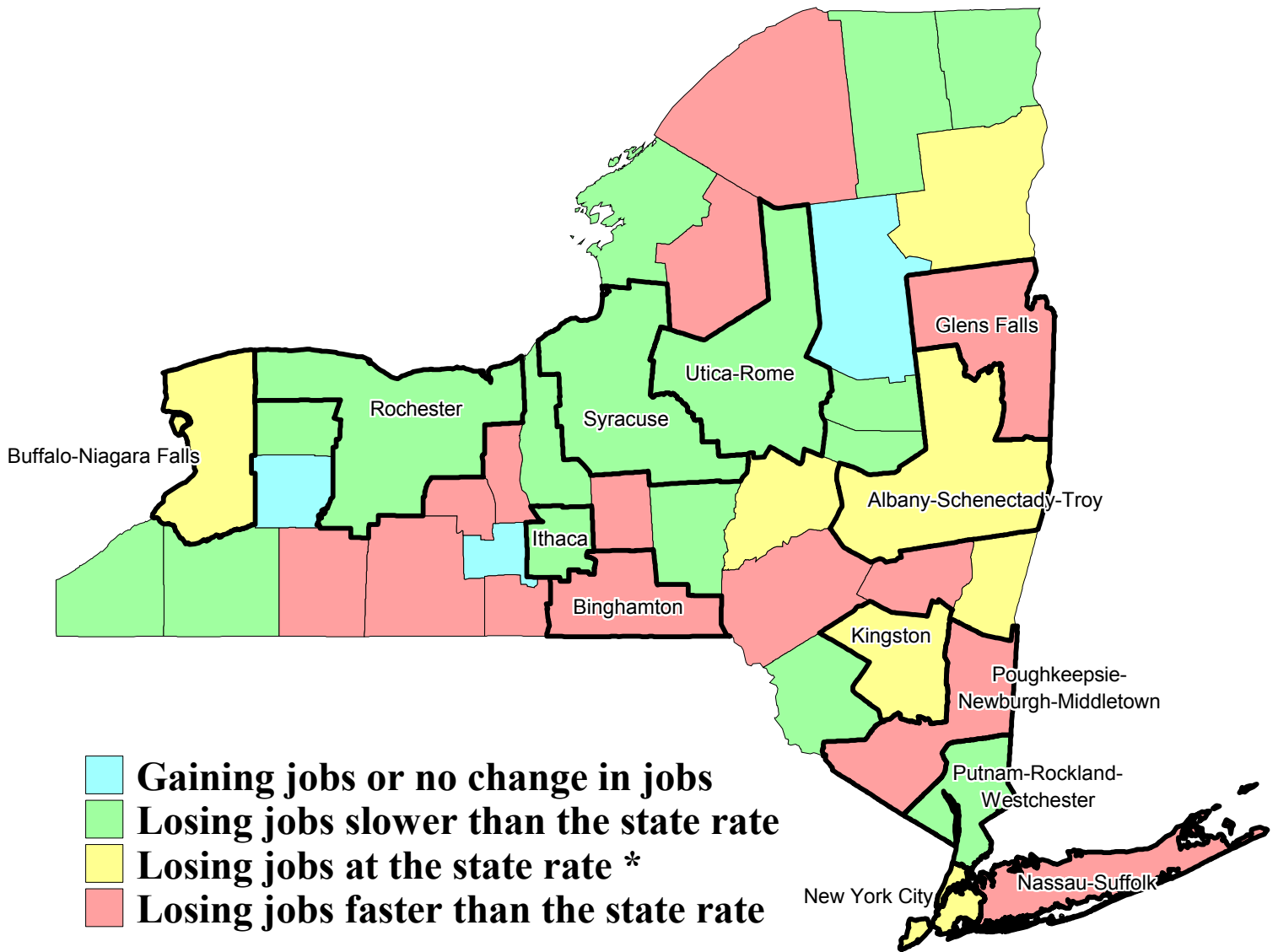
...NYS total unemployment increased



...NYS labor force participation decreased



Private Sector Job Growth by Area, New York State, August 2008 - August 2009



* Represents job loss of between -2.6% and -3% from August 2008 to August 2009.

Unemployment Rates by County, New York State, August 2009

