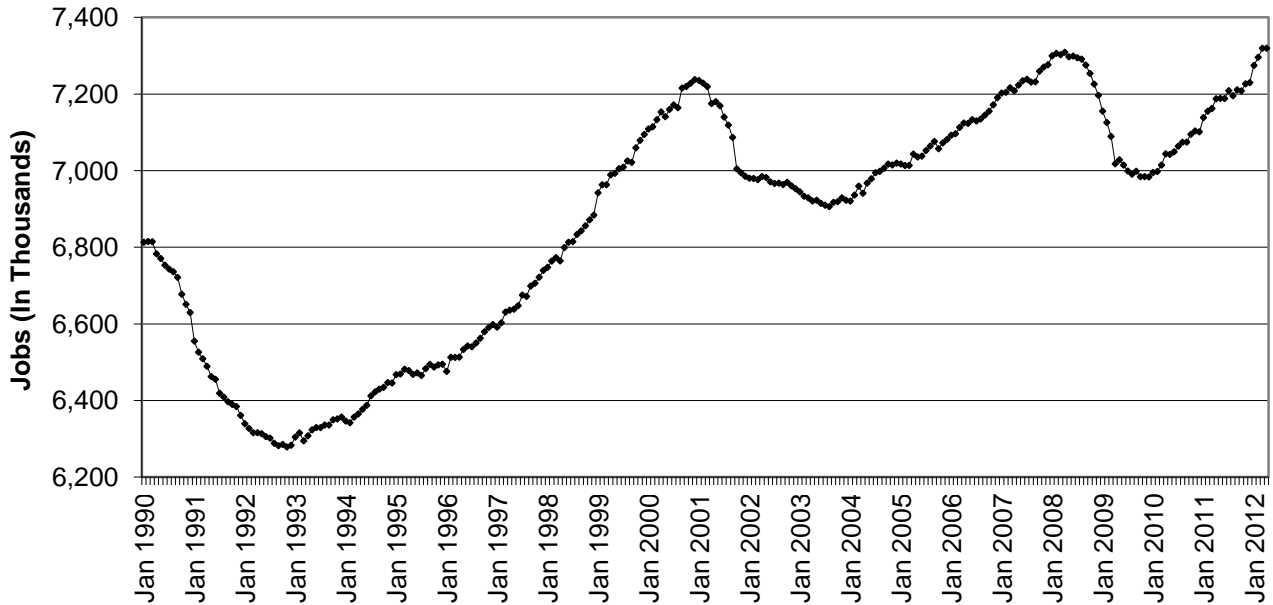


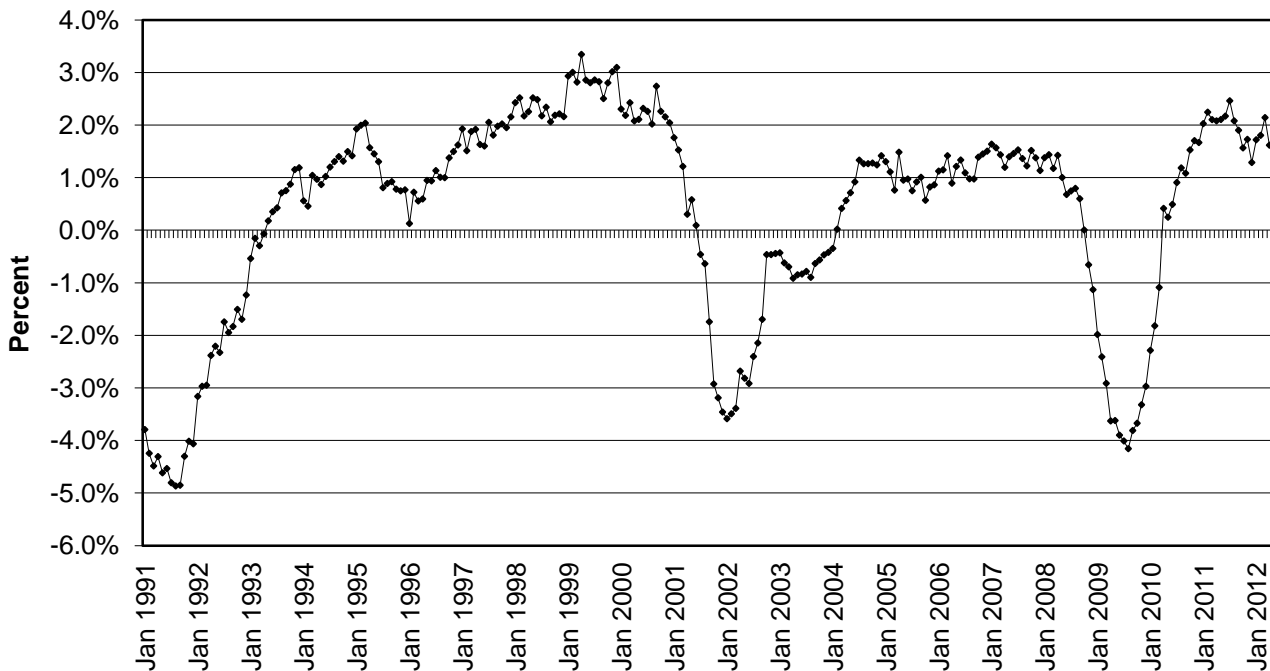
### CHART 1: PRIVATE SECTOR JOB COUNT

(Seasonally Adjusted)  
NEW YORK STATE  
JANUARY 1990 - APRIL 2012



### CHART 2: OVER-THE-YEAR CHANGE IN PRIVATE SECTOR JOBS

(Not Seasonally Adjusted)  
NEW YORK STATE  
JANUARY 1991 - APRIL 2012



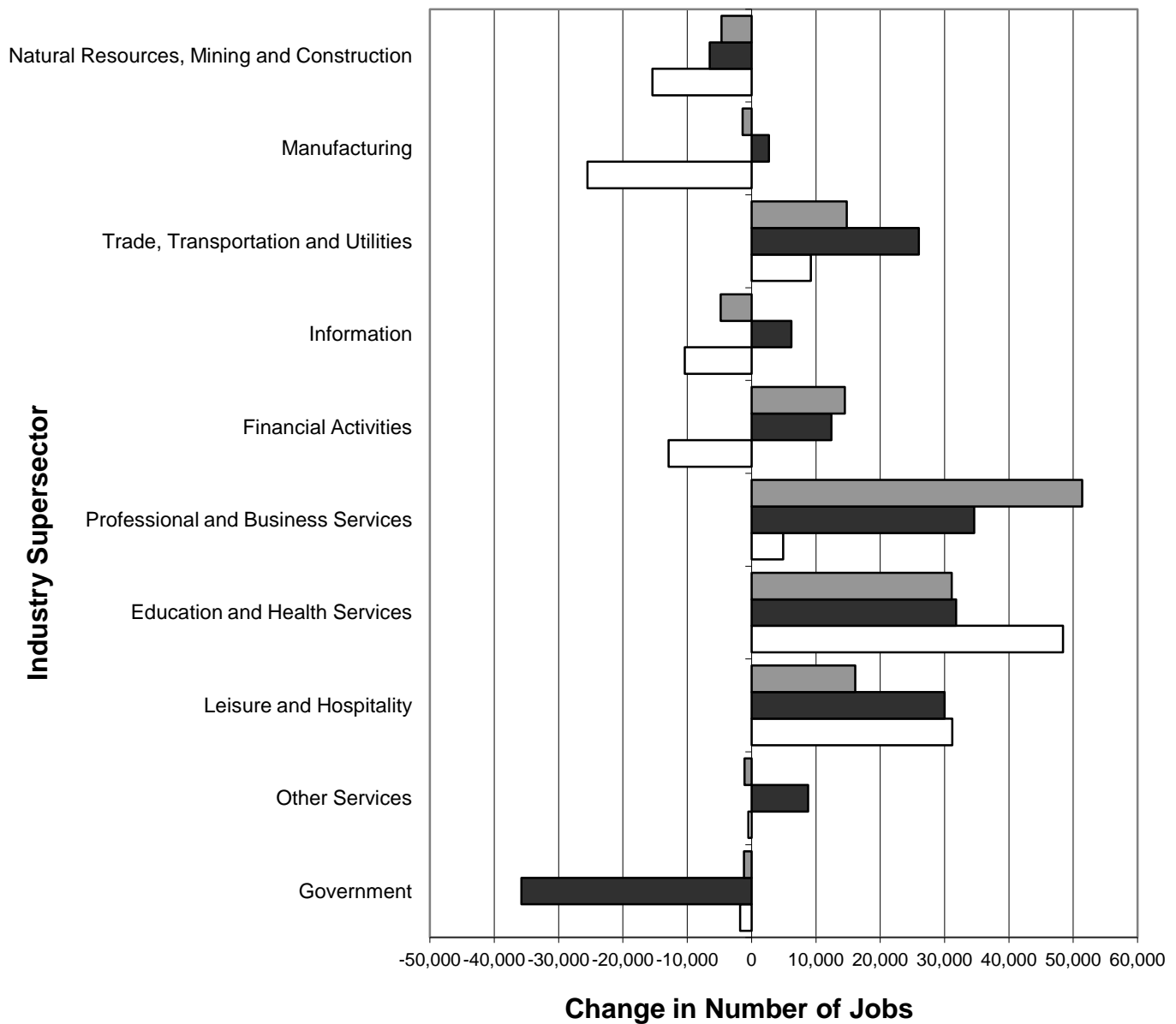
Note: The current private sector jobs series begins in January 1990; thus, over-the-year changes in the series start in January 1991.

### CHART 3: OVER-THE-YEAR CHANGE IN NONFARM JOBS BY SUPERSECTOR

NEW YORK STATE

(Not Seasonally Adjusted)

APRIL 2009-APRIL 2010, APRIL 2010-APRIL 2011, APRIL 2011-APRIL 2012



■ APR 2011-APR 2012

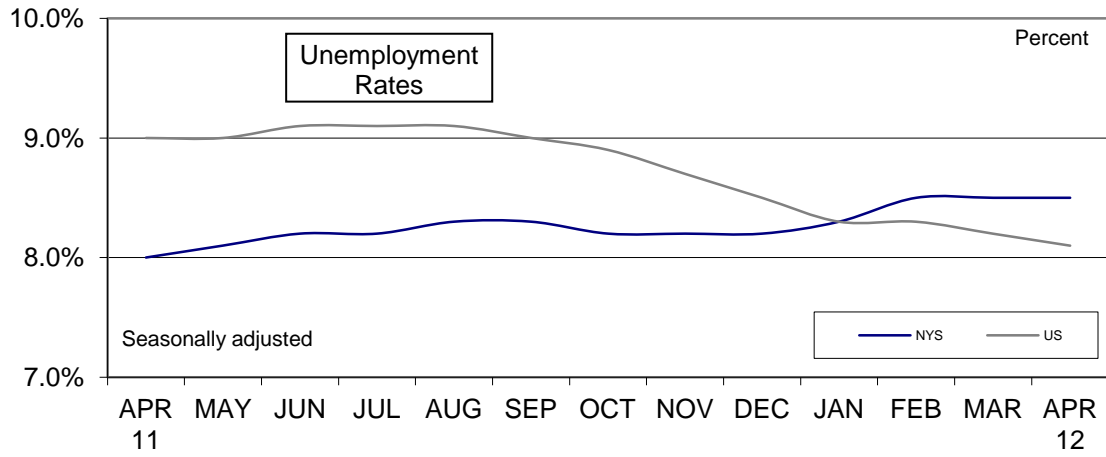
■ APR 2010-APR 2011

■ APR 2009-APR 2010

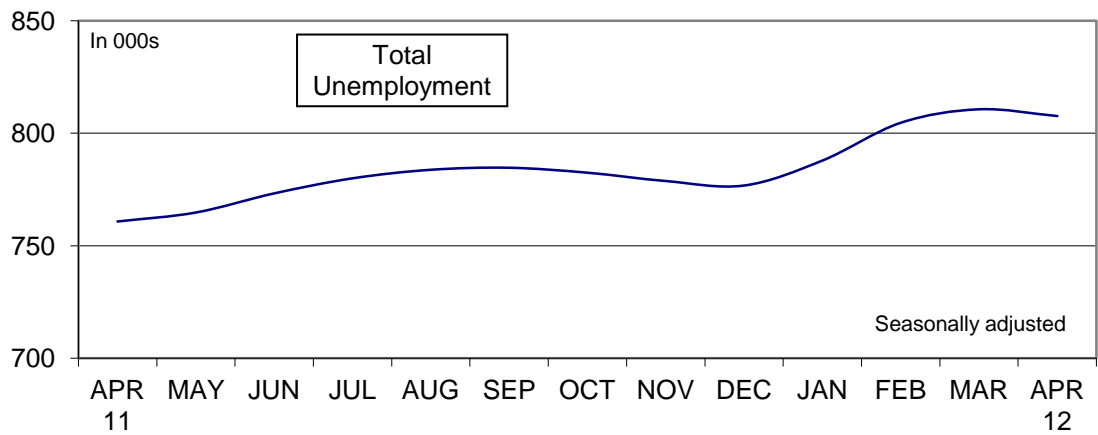
## CHART 4: LABOR FORCE STATISTICS IN APRIL 2012

In April...

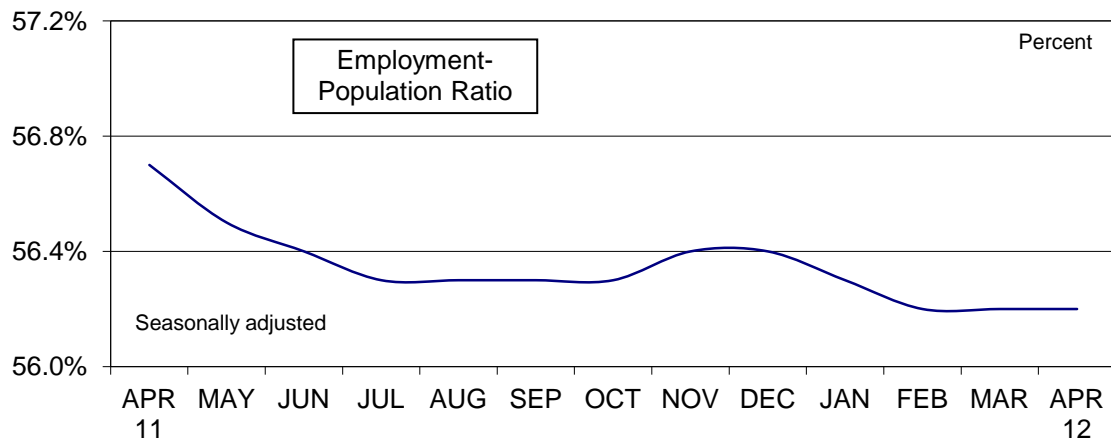
...NYS unemployment rate remained the same



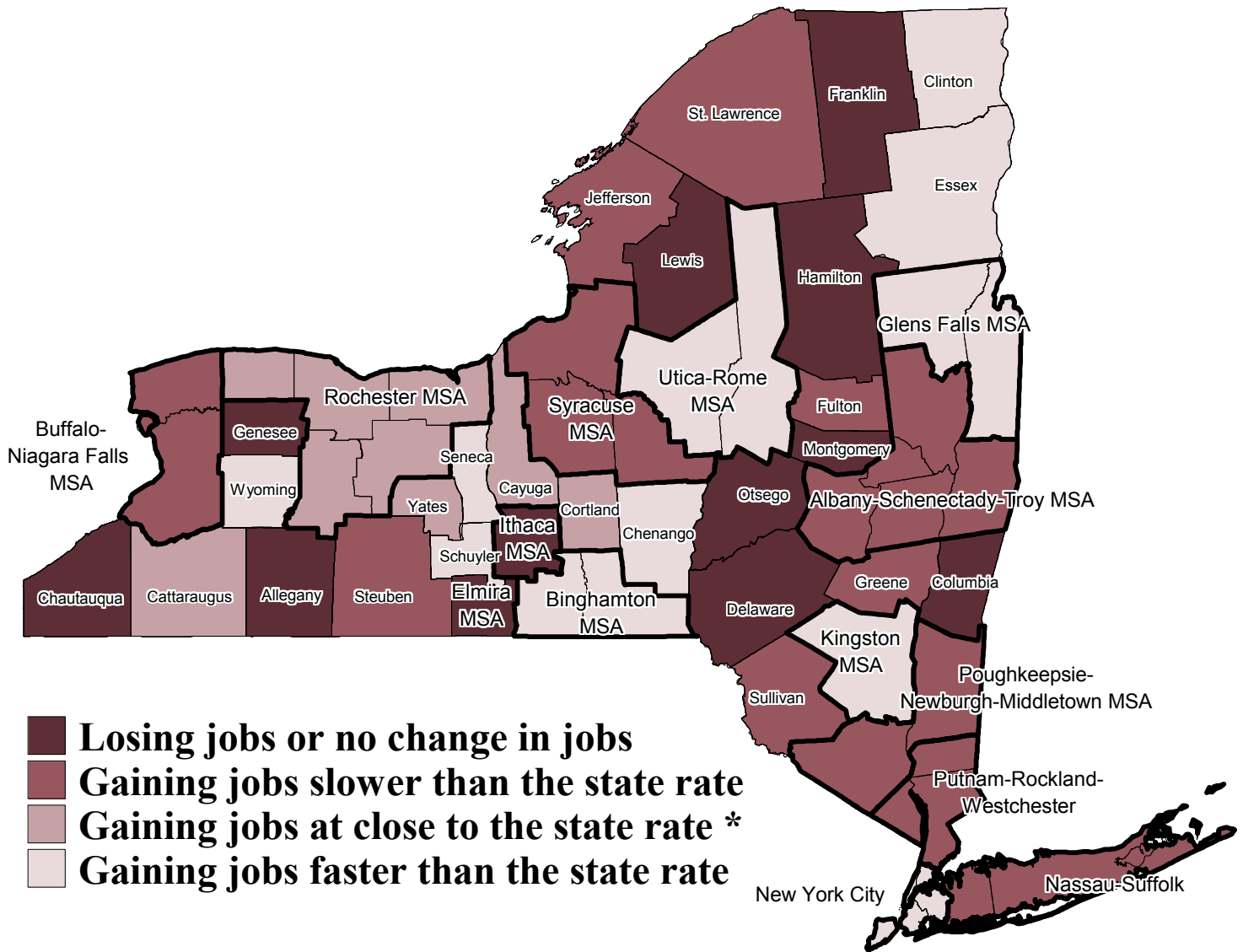
...NYS total unemployment decreased



...NYS labor force participation remained the same



# Percent Change in Private Sector Jobs by Area, New York State, April 2011 - April 2012



\* Represents job gain of between 1.4% and 1.8% from April 2011 to April 2012.