

Labor Market Overview

Albany-Schenectady-Troy MSA

April 2012



prepared by:

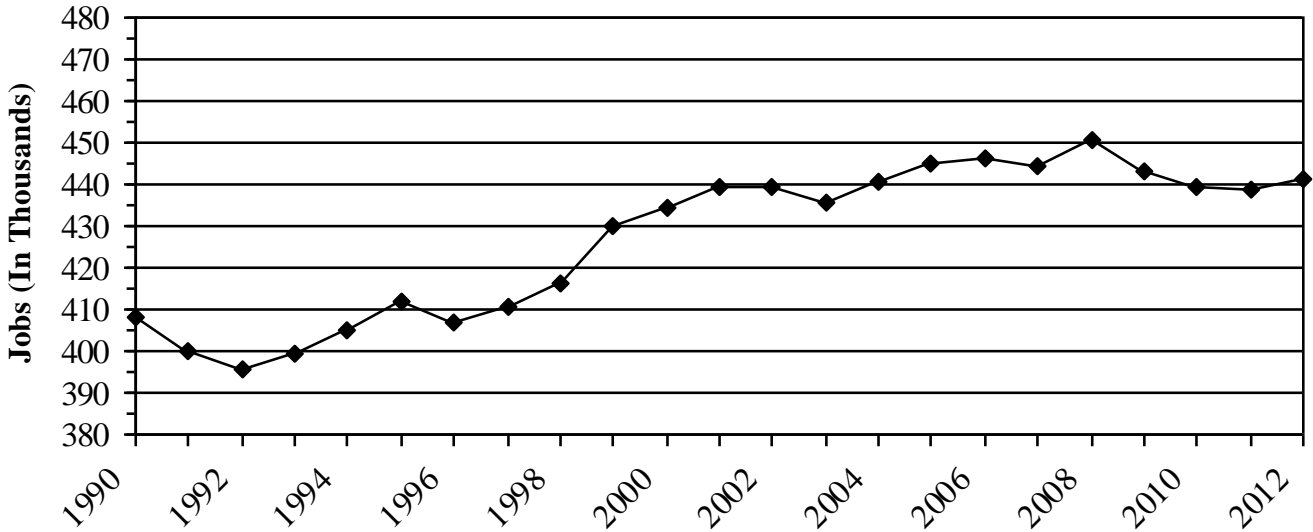
James H. Ross

Labor Market Analyst

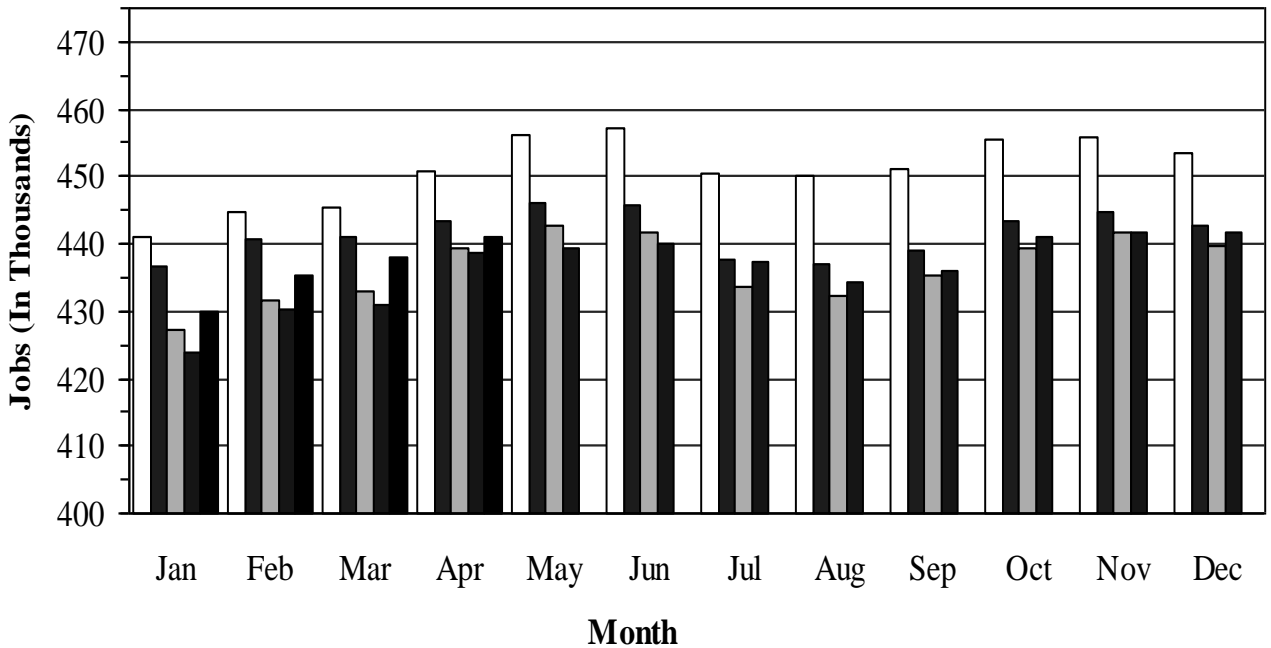
Available online at www.labor.state.ny.us/stats/cap/albany.pdf



NONAGRICULTURAL WAGE AND SALARY JOBS
ALBANY-SCHENECTADY-TROY MSA,
 April 1990-April 2012

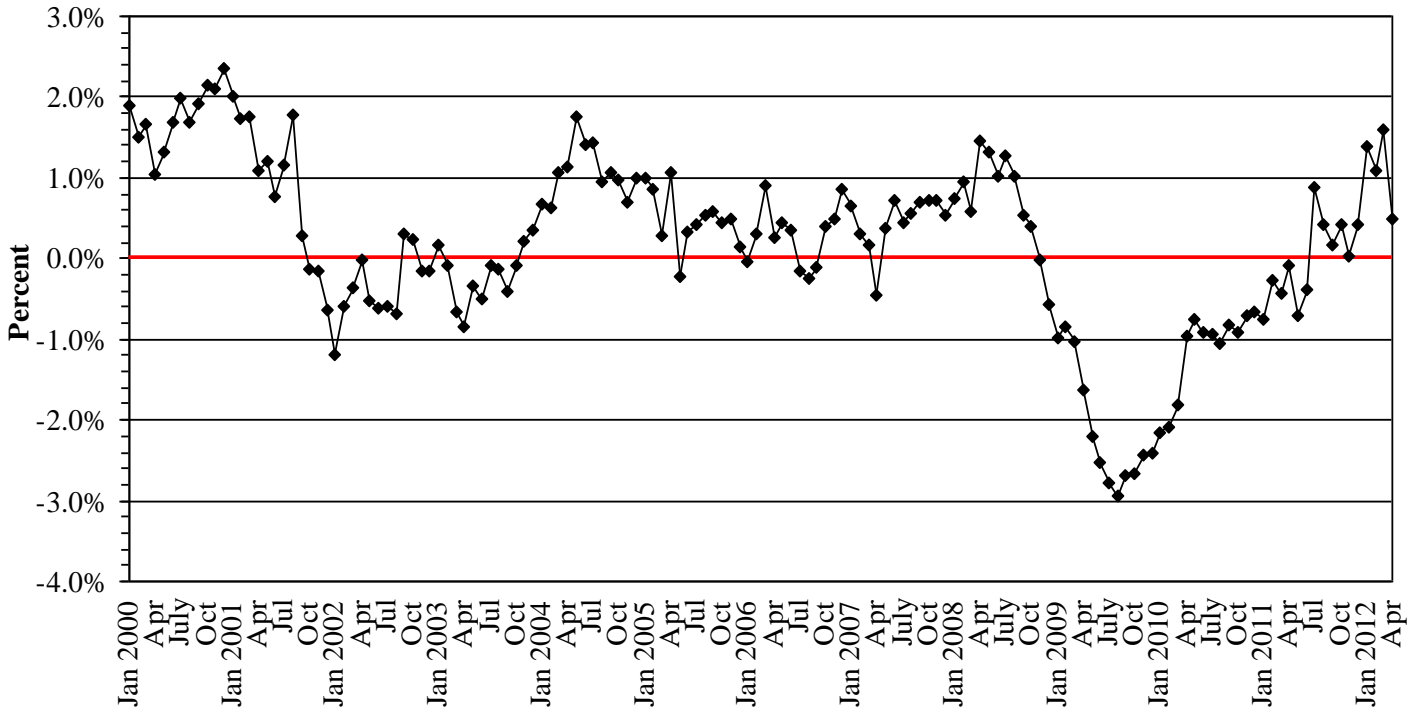


MONTHLY JOB COUNTS
 ALBANY - SCHENECTADY - TROY MSA, 2008 - 2012



2008
 2009
 2010
 2011
 2012

RATE OF GROWTH IN JOBS
ALBANY - SCHENECTADY - TROY MSA, January 2000 -April 2012

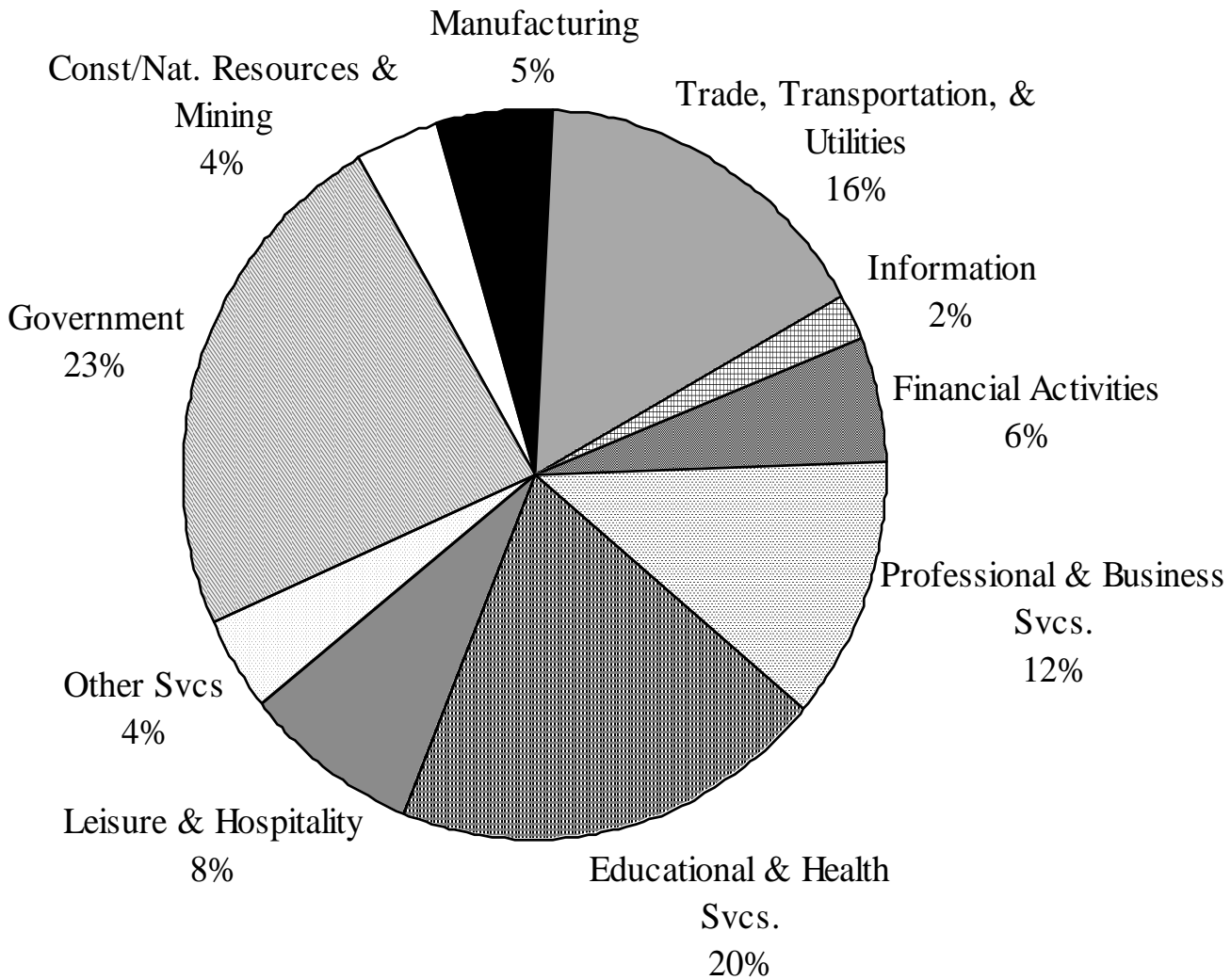


Note: Based on year-to-year change

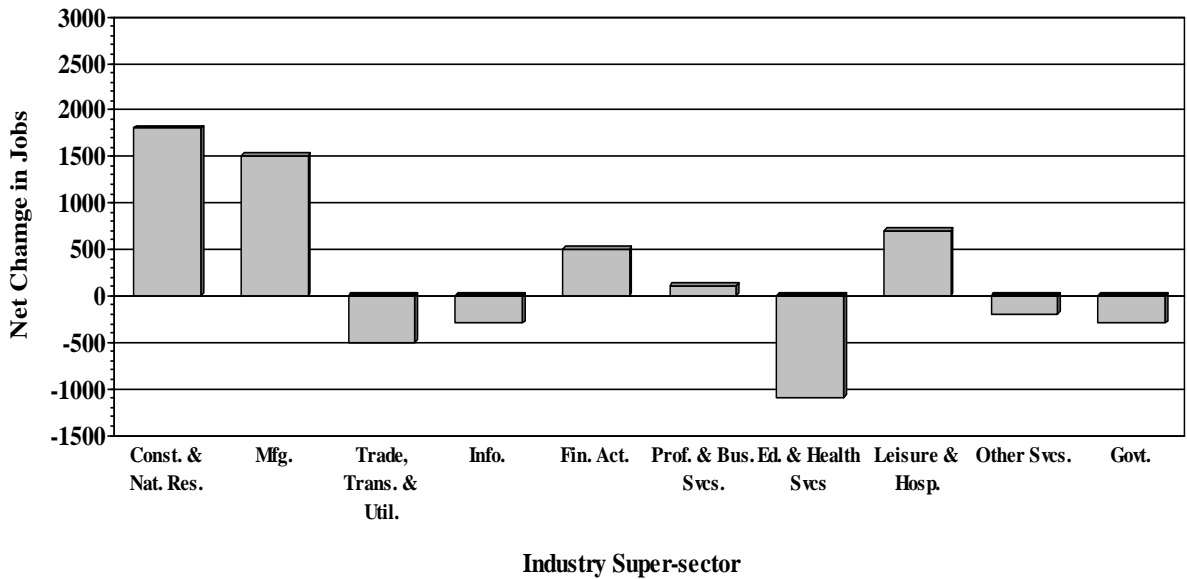
NONAGRICULTURAL EMPLOYMENT BY SUPER-SECTOR

ALBANY-SCHENECTADY-TROY MSA, April 2012

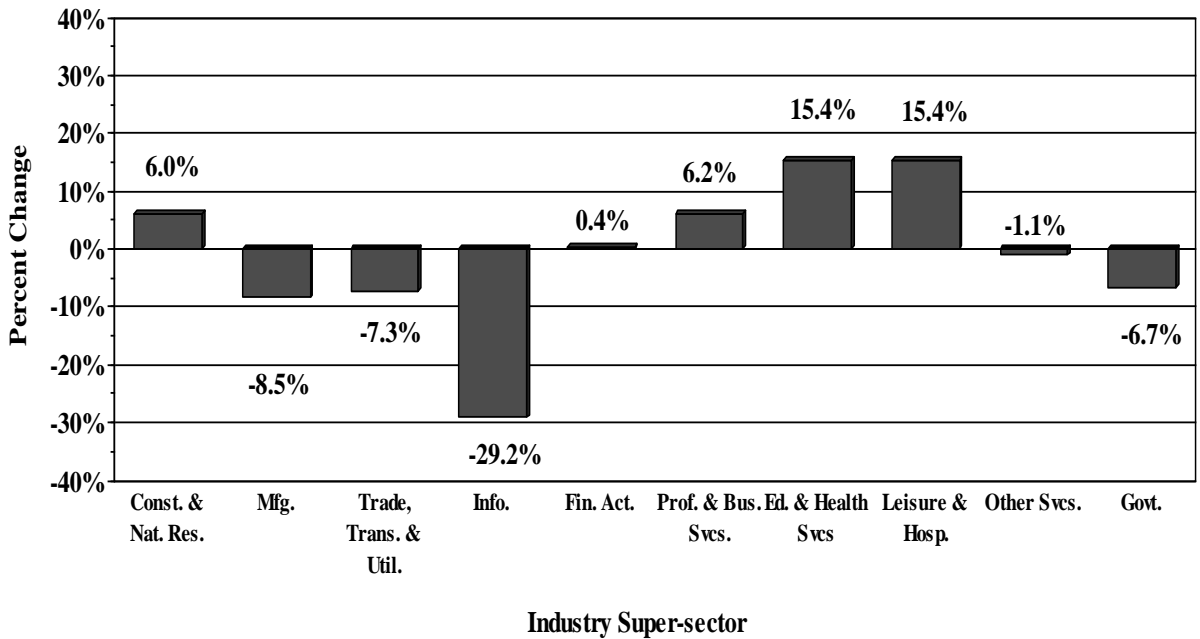
Industry Super-sector



NET CHANGE IN JOB COUNTS BY SUPER-SECTOR
ALBANY - SCHENECTADY - TROY MSA, April 2011 - April 2012



PERCENT CHANGE IN JOB COUNTS BY SUPER-SECTOR
ALBANY - SCHENECTADY - TROY MSA, April 2002 - April 2012



**Table 1. Number of Nonfarm Jobs by Place of Work
New York State and Areas
(In Thousands, Not Seasonally Adjusted)**

Area	April 2012	March 2012 (R)	April 2011 (R)	Change to April 2012 from:			
				March 2012		April 2011	
				Net	%	Net	%
New York State	8,783.0	8,710.0	8,668.3	73.0	0.8	114.7	1.3
Metropolitan Areas							
Albany-Schenectady-Troy	441.0	438.1	438.8	2.9	0.7	2.2	0.5
Binghamton	111.1	109.8	108.8	1.3	1.2	2.3	2.1
Buffalo-Niagara Falls	543.5	539.0	541.1	4.5	0.8	2.4	0.4
Elmira	38.7	38.3	40.5	0.4	1.0	-1.8	-4.4
Glens Falls	55.5	54.6	52.8	0.9	1.7	2.7	5.1
Ithaca (Tompkins County)	63.6	63.0	67.4	0.6	1.0	-3.8	-5.6
Kingston (Ulster County)	62.9	62.0	61.3	0.9	1.5	1.6	2.6
Nassau-Suffolk	1,243.3	1,236.1	1,238.8	7.2	0.6	4.5	0.4
New York City	3,849.8	3,822.1	3,786.8	27.7	0.7	63.0	1.7
Poughkeepsie-Newburgh-Middletown	250.6	249.9	249.8	0.7	0.3	0.8	0.3
Putnam-Rockland-Westchester	564.4	556.2	561.3	8.2	1.5	3.1	0.6
Rochester	517.0	513.6	509.2	3.4	0.7	7.8	1.5
Syracuse	317.7	312.7	314.8	5.0	1.6	2.9	0.9
Utica-Rome	131.7	130.2	128.6	1.5	1.2	3.1	2.4
Counties Outside Metropolitan Areas							
Allegany	17.8	17.9	18.0	-0.1	-0.6	-0.2	-1.1
Cattaraugus	33.0	33.7	32.7	-0.7	-2.1	0.3	0.9
Cayuga	26.1	25.6	26.0	0.5	2.0	0.1	0.4
Chautauque	52.9	53.0	53.0	-0.1	-0.2	-0.1	-0.2
Chemungo	17.9	17.8	17.3	0.1	0.6	0.6	3.5
Clinton	34.2	33.9	34.0	0.3	0.9	0.2	0.6
Columbia	20.1	19.7	20.3	0.4	2.0	-0.2	-1.0
Cortland	19.1	19.1	19.1	0.0	0.0	0.0	0.0
Delaware	16.3	16.0	16.7	0.3	1.9	-0.4	-2.4
Essex	13.3	14.2	13.2	-0.9	-6.3	0.1	0.8
Franklin	19.1	19.1	19.3	0.0	0.0	-0.2	-1.0
Fulton	18.4	18.2	18.5	0.2	1.1	-0.1	-0.5
Genesee	21.9	21.5	22.2	0.4	1.9	-0.3	-1.4
Greene	14.1	14.6	14.0	-0.5	-3.4	0.1	0.7
Hamilton	1.7	1.7	1.7	0.0	0.0	0.0	0.0
Jefferson	42.5	41.6	42.2	0.9	2.2	0.3	0.7
Lewis	6.3	6.4	6.5	-0.1	-1.6	-0.2	-3.1
Montgomery	19.0	18.7	19.0	0.3	1.6	0.0	0.0
Otsego	26.6	26.3	26.9	0.3	1.1	-0.3	-1.1
St. Lawrence	41.2	40.8	41.3	0.4	1.0	-0.1	-0.2
Schryler	5.1	4.9	4.9	0.2	4.1	0.2	4.1
Seneca	11.4	11.3	11.2	0.1	0.9	0.2	1.8
Stauben	38.1	37.9	38.0	0.2	0.5	0.1	0.3
Sullivan	25.0	24.4	25.1	0.6	2.5	-0.1	-0.4
Wyoming	13.0	12.9	13.0	0.1	0.8	0.0	0.0
Yates	7.6	7.4	7.5	0.2	2.7	0.1	1.3

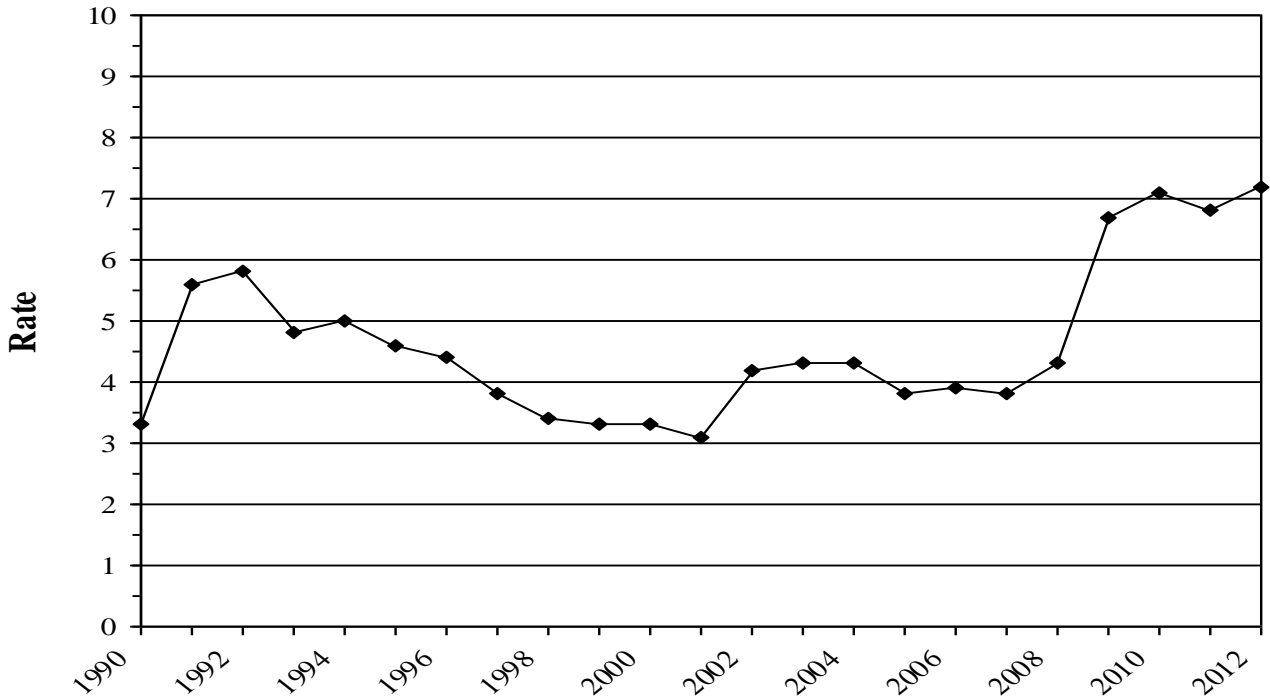
Note: Data are subject to revision. R=Revised. Net and % changes based on rounded data.
Source: New York State Department of Labor, Division of Research and Statistics, 518-457-3800.

**EMPLOYMENT IN NONAGRICULTURAL ESTABLISHMENTS, BY PLACE OF WORK
ALBANY-SCHENECTADY-TROY AREA
(In thousands, not seasonally adjusted)**

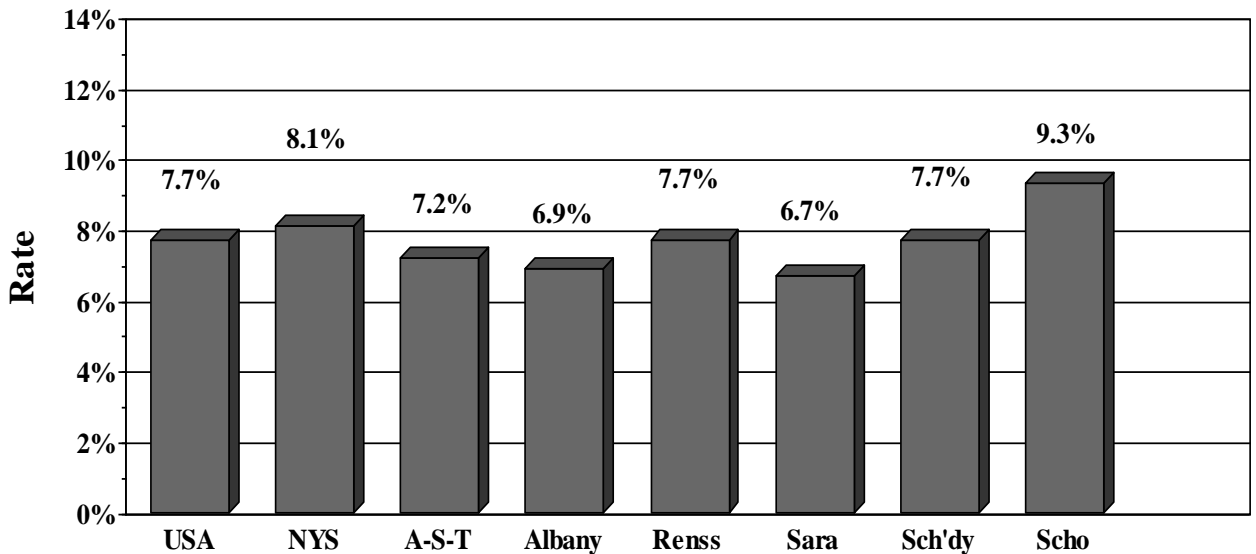
Industry	APR 2012	MAR 2012	APR 2011	Net Month	Pct Month	Net Year	Pct Year
Total Nonfarm	441.0	438.1	438.8	2.9	0.7	2.2	0.5
Total Private	337.7	335.4	335.2	2.3	0.7	2.5	0.7
Goods Producing	40.4	38.8	37.1	1.6	4.1	3.3	8.9
Natural Resources, Mining and Construction	17.7	16.4	15.9	1.3	7.9	1.8	11.3
Manufacturing	22.7	22.4	21.2	0.3	1.3	1.5	7.1
Service Providing	400.6	399.3	401.7	1.3	0.3	-1.1	-0.3
Private Service Providing	297.3	296.6	298.1	0.7	0.2	-0.8	-0.3
Trade, Transportation, and Utilities	70.8	70.3	71.3	0.5	0.7	-0.5	-0.7
Wholesale Trade	13.0	13.0	13.3	0.0	0.0	-0.3	-2.3
Retail Trade	45.9	45.4	45.9	0.5	1.1	0.0	0.0
Food and Beverage Stores	9.8	10.0	9.6	-0.2	-2.0	0.2	2.1
General Merchandise Stores	8.5	8.5	8.5	0.0	0.0	0.0	0.0
Transportation, Warehousing, and Utilities	11.9	11.9	12.1	0.0	0.0	-0.2	-1.7
Transportation and Warehousing	10.3	10.4	10.5	-0.1	-1.0	-0.2	-1.9
Information	8.5	8.5	8.8	0.0	0.0	-0.3	-3.4
Telecommunications	3.0	3.0	3.0	0.0	0.0	0.0	0.0
Financial Activities	24.9	25.1	24.4	-0.2	-0.8	0.5	2.0
Professional and Business Services	51.7	52.7	51.6	-1.0	-1.9	0.1	0.2
Professional, Scientific, and Technical Services	29.9	30.5	30.2	-0.6	-2.0	-0.3	-1.0
Management of Companies and Enterprises	6.8	6.9	6.6	-0.1	-1.4	0.2	3.0
Admin. & Supp. and Waste Manage. & Remed. Servs.	15.0	15.3	14.8	-0.3	-2.0	0.2	1.4
Education and Health Services	88.5	88.3	89.6	0.2	0.2	-1.1	-1.2
Educational Services	26.2	26.1	27.8	0.1	0.4	-1.6	-5.8
Health Care and Social Assistance	62.3	62.2	61.8	0.1	0.2	0.5	0.8
Ambulatory Health Care Services	17.2	17.2	17.1	0.0	0.0	0.1	0.6
Hospitals	18.0	17.9	18.2	0.1	0.6	-0.2	-1.1
Leisure and Hospitality	35.2	34.1	34.5	1.1	3.2	0.7	2.0
Accommodation and Food Services	30.4	29.4	29.7	1.0	3.4	0.7	2.4
Other Services	17.7	17.6	17.9	0.1	0.6	-0.2	-1.1
Government	103.3	102.7	103.6	0.6	0.6	-0.3	-0.3
Federal Government	6.7	6.7	6.9	0.0	0.0	-0.2	-2.9
Federal Government Hospitals	1.6	1.6	1.6	0.0	0.0	0.0	0.0
State Government	48.5	48.5	48.9	0.0	0.0	-0.4	-0.8
State Government Education	7.9	7.5	7.3	0.4	5.3	0.6	8.2
State Government Hospitals	0.6	0.6	0.6	0.0	0.0	0.0	0.0
Local Government	48.1	47.5	47.8	0.6	1.3	0.3	0.6
Local Government Education	28.9	28.3	29.1	0.6	2.1	-0.2	-0.7

NOTE: DATA ARE SUBJECT TO REVISION. DETAIL MAY NOT ADD TO TOTALS DUE TO ROUNDING. NET AND PERCENT CHANGES ARE BASED ON ROUNDED DATA

UNEMPLOYMENT RATE
ALBANY-SCHENECTADY-TROY MSA,
 April 1990– April 2012



RESIDENT CIVILIAN UNEMPLOYMENT RATE - April 2012
 United States, New York State & Albany-Schenectady-Troy MSA By County



EMPLOYED, UNEMPLOYED, AND RATE OF UNEMPLOYMENT
BY PLACE OF RESIDENCE
FOR NEW YORK STATE AND MAJOR LABOR AREAS, APR 2012
(Numbers in thousands, not seasonally adjusted)

AREA/COUNTY	EMPLOYED			UNEMPLOYED			UNEMP. RATE		
	APR 2012	MAR 2012	APR 2011	APR 2012	MAR 2012	APR 2011	APR 2012	MAR 2012	APR 2011
UNITED STATES	141995.0	141412.0	139661.0	11910	12904	13237	7.7	8.4	8.7
NEW YORK STATE	8704.9	8673.5	8717.1	768.7	827.2	728.5	8.1	8.7	7.7
NEW YORK CITY	3586.7	3582.2	3600.2	345.0	387.7	330.2	8.8	9.8	8.4
BRONX	477.7	477.0	479.4	65.1	75.1	61.9	12.0	13.6	11.4
KINGS	1009.7	1008.5	1013.5	107.3	116.8	102.0	9.6	10.4	9.1
NEW YORK	852.0	850.9	855.2	64.7	76.0	63.0	7.1	8.2	6.9
QUEENS	1026.4	1025.1	1030.3	87.5	98.9	84.9	7.9	8.8	7.6
RICHMOND	220.9	220.6	221.8	20.4	20.9	18.5	8.4	8.6	7.7
PUT-ROCK-WEST	633.9	628.3	633.5	45.1	45.9	42.2	6.6	6.8	6.2
PUTNAM	50.3	49.8	50.2	3.3	3.4	3.4	6.2	6.4	6.4
ROCKLAND	145.0	143.8	144.9	10.3	10.1	9.1	6.7	6.6	5.9
WESTCHESTER	438.6	434.7	438.3	31.4	32.3	29.7	6.7	6.9	6.3
NASSAU-SUFFOLK	1351.0	1348.2	1353.6	103.8	104.7	95.3	7.1	7.2	6.6
NASSAU	633.0	631.7	634.2	45.5	45.5	42.0	6.7	6.7	6.2
SUFFOLK	718.0	716.5	719.4	58.2	59.2	53.3	7.5	7.6	6.9
ALB-SCHEN-TROY	409.0	407.8	409.4	31.8	33.3	29.7	7.2	7.6	6.8
ALBANY	143.1	142.7	143.2	10.6	11.0	10.1	6.9	7.1	6.6
RENSSELAER	75.4	75.2	75.5	6.3	6.7	5.6	7.7	8.2	6.9
SARATOGA	108.0	107.7	108.1	7.7	8.2	7.3	6.7	7.1	6.3
SCHENECTADY	68.6	68.4	68.6	5.7	5.7	5.3	7.7	7.7	7.2
SCHOHARIE	14.0	13.9	14.0	1.4	1.7	1.4	9.3	11.1	9.0
BINGHAMTON	109.6	108.6	108.2	9.6	10.2	9.5	8.1	8.6	8.1
BROOME	86.5	85.7	85.4	7.8	8.2	7.7	8.2	8.7	8.3
TIOGA	23.1	22.9	22.8	1.8	2.0	1.8	7.4	8.1	7.3
BUFFALO-NIAGARA	520.4	518.7	522.6	47.0	48.4	43.3	8.3	8.5	7.6
ERIE	420.4	419.0	422.2	37.0	38.2	34.2	8.1	8.4	7.5
NIAGARA	100.1	99.7	100.5	10.0	10.3	9.0	9.1	9.3	8.3
ELMIRA (CHEMUNG)	35.5	35.3	37.1	3.3	3.3	3.0	8.4	8.6	7.5
GLENS FALLS	62.3	61.4	59.9	5.4	6.1	5.3	8.0	9.1	8.1
WARREN	32.6	32.2	31.4	3.1	3.5	2.9	8.6	9.8	8.5
WASHINGTON	29.6	29.2	28.5	2.3	2.6	2.3	7.3	8.2	7.6
ITHACA (TOMPKINS)	51.2	50.7	54.2	3.1	3.2	3.0	5.7	5.9	5.3
KINGSTON (ULSTER)	81.7	81.1	80.6	7.3	7.5	6.7	8.2	8.5	7.7
POUGH-NEWB-MDLT	292.8	292.4	293.3	24.9	24.9	23.1	7.8	7.8	7.3
DUTCHESS	133.5	133.3	133.7	10.7	11.1	10.3	7.4	7.7	7.2
ORANGE	159.3	159.1	159.5	14.2	13.8	12.8	8.2	8.0	7.4
ROCHESTER	484.9	483.0	480.9	40.4	42.0	38.0	7.7	8.0	7.3
LIVINGSTON	29.8	29.7	29.6	2.6	3.0	2.5	8.0	9.1	7.8
MONROE	341.5	340.1	338.7	28.0	28.0	25.8	7.6	7.6	7.1
ONTARIO	52.5	52.3	52.1	4.1	4.7	4.1	7.2	8.3	7.2
ORLEANS	17.4	17.4	17.3	1.9	1.9	1.6	9.7	10.0	8.7
WAYNE	43.7	43.5	43.3	3.9	4.4	4.0	8.2	9.2	8.4
SYRACUSE	295.0	291.2	294.1	26.0	27.8	24.9	8.1	8.7	7.8
MADISON	33.0	32.6	32.9	3.0	3.3	2.9	8.3	9.3	8.2
ONONDAGA	210.2	207.6	209.6	17.4	18.0	16.2	7.7	8.0	7.2
OSWEGO	51.7	51.0	51.5	5.6	6.5	5.7	9.8	11.3	10.0
UTICA-ROME	127.6	126.4	125.5	11.5	12.2	11.0	8.2	8.8	8.0
HERKIMER	28.3	28.1	27.9	2.8	3.1	2.8	9.1	9.8	9.0
ONEIDA	99.3	98.3	97.6	8.6	9.1	8.2	8.0	8.5	7.8

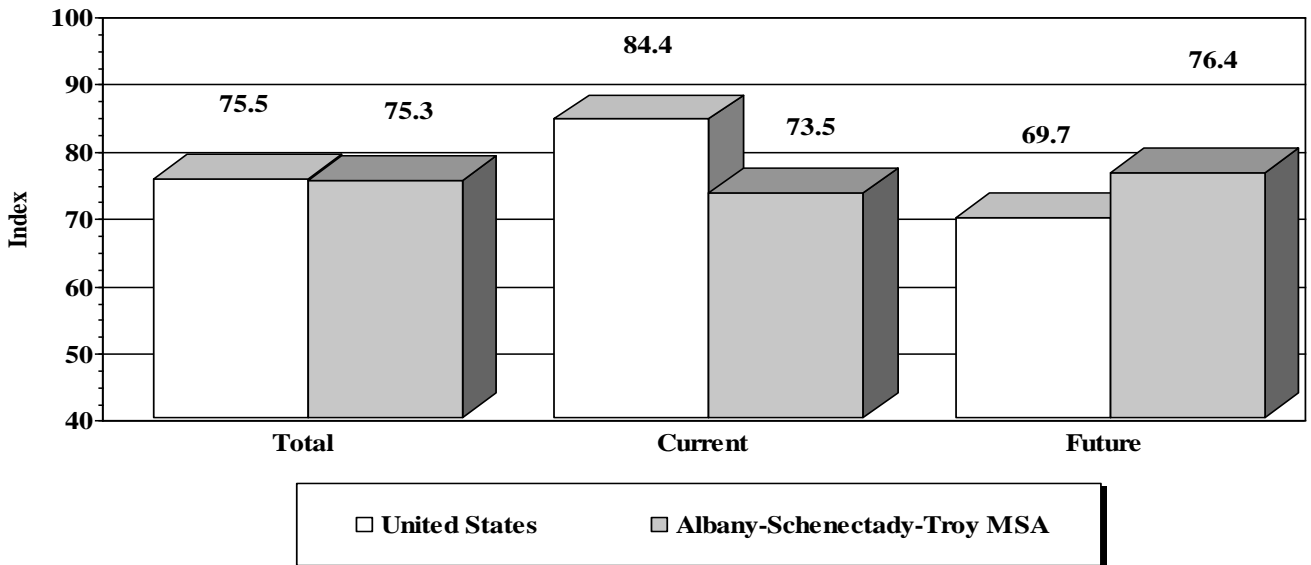
Note: Data are subject to revision. Detail may not add to totals due to rounding.
Source: New York State Department of Labor, Division of Research and Statistics.

EMPLOYED, UNEMPLOYED, AND RATE OF UNEMPLOYMENT
 BY PLACE OF RESIDENCE
 FOR COUNTIES NOT WITHIN MAJOR LABOR AREAS, APR 2012
 (Numbers in thousands, not seasonally adjusted)

AREA/COUNTY	EMPLOYED			UNEMPLOYED			UNEMP. RATE		
	APR 2012	MAR 2012	APR 2011	APR 2012	MAR 2012	APR 2011	APR 2012	MAR 2012	APR 2011
ALLEGANY	21.6	21.7	21.9	1.9	2.1	2.1	8.2	8.9	8.7
CATTARAUGUS	36.5	37.1	36.6	3.5	3.8	3.5	8.7	9.2	8.8
CAYUGA	37.1	36.5	37.1	3.2	3.4	3.0	7.9	8.6	7.5
CHAUTAUQUA	56.7	56.7	56.9	5.0	5.4	4.8	8.1	8.6	7.8
CHENANGO	22.8	22.5	22.1	2.0	2.2	2.0	7.9	8.9	8.1
CLINTON	34.1	33.9	34.0	3.6	3.9	3.7	9.6	10.4	9.9
COLUMBIA	27.9	27.5	28.0	2.2	2.3	2.2	7.2	7.7	7.2
CORTLAND	22.0	21.9	22.2	2.0	2.2	1.9	8.2	9.3	8.0
DELAWARE	19.5	19.1	19.7	1.9	1.9	1.8	8.7	9.1	8.4
ESSEX	14.9	15.7	14.9	1.8	1.9	1.7	10.7	10.9	10.4
FRANKLIN	19.9	19.9	20.1	2.1	2.3	2.1	9.7	10.4	9.3
FULTON	23.8	23.7	24.0	2.8	2.9	2.6	10.6	11.0	9.8
GENESEE	28.9	28.5	29.2	2.4	2.7	2.3	7.6	8.5	7.4
GREENE	20.9	21.3	20.8	2.2	2.3	2.0	9.4	9.6	8.6
HAMILTON	2.3	2.4	2.3	0.3	0.3	0.3	11.7	12.2	10.5
JEFFERSON	43.3	42.4	43.1	4.8	5.3	4.8	10.1	11.1	10.0
LEWIS	11.1	10.9	11.2	1.3	1.4	1.2	10.2	11.5	9.9
MONTGOMERY	21.5	21.2	21.4	2.5	2.6	2.2	10.3	10.8	9.5
OTSEGO	28.7	28.3	28.9	2.4	2.6	2.3	7.6	8.4	7.2
ST. LAWRENCE	43.9	43.4	44.0	4.9	5.3	5.1	10.1	11.0	10.3
SCHUYLER	9.1	8.9	9.0	0.8	0.9	0.8	8.4	9.0	8.1
SENECA	15.4	15.3	15.3	1.2	1.4	1.2	7.5	8.4	7.5
STEUBEN	39.9	39.6	39.9	4.1	4.4	4.1	9.3	10.0	9.3
SULLIVAN	30.4	29.8	30.6	3.2	3.4	3.0	9.5	10.2	8.9
WYOMING	18.5	18.3	18.4	1.7	2.0	1.7	8.4	9.7	8.5
YATES	12.4	12.1	12.3	0.9	1.0	0.9	6.8	7.6	6.6

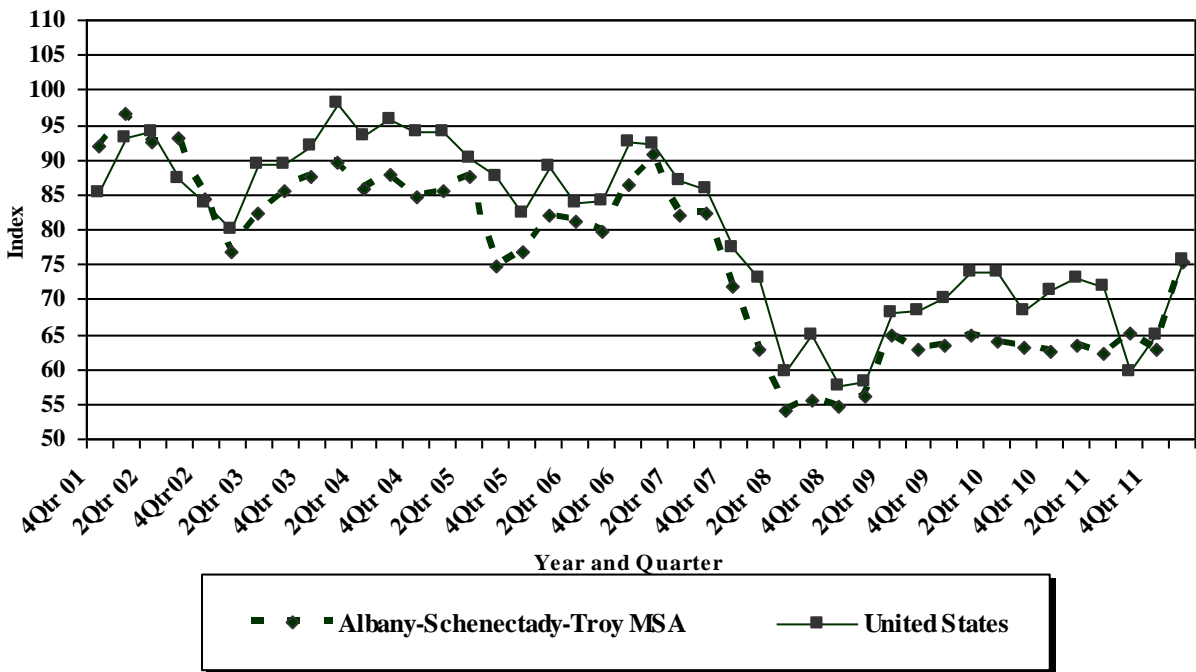
Note: Data are subject to revision. Detail may not add to totals due to rounding.
 Source: New York State Department of Labor, Division of Research and Statistics.

**CONSUMER CONFIDENCE INDEX
UNITED STATES AND ALBANY-SCHENECTADY-TROY MSA
FIRST QUARTER 2012**



Source: Siena Research Institute

**CONSUMER CONFIDENCE INDEX
UNITED STATES AND ALBANY-SCHENECTADY-TROY MSA**



FACT SHEET

This fact sheet conveys important technical information that will contribute to a better understanding of resident labor force, including unemployment rates, and job data included in this and future press releases.

State unemployment rates based on regression model

Unemployment rates for New York State and all other states (as well as New York City and the City of Los Angeles) are estimated using time-series regression models developed by the U.S. Bureau of Labor Statistics. The model reduces month-to-month variation in labor force data by reducing variation caused by sampling errors and other statistical noise (irregularities).

Benchmarking of estimates

At the end of each year, labor force data are revised to reflect updated input data including new Census population controls, revised establishment jobs data, and revised state-level data from the Current Population Survey (CPS). As part of this procedure, all state figures are reviewed, revised as necessary, and then re-estimated. This process is commonly referred to as "benchmarking."

Changes in methodology

With the release of January 2005 data, a new time-series regression model that utilizes "real-time" benchmarking is in effect. The redesigned model should reduce end-of-year revisions as major economic events will be reflected in a more timely manner. The new model also changes how estimates of new entrants or re-entrants into the labor force are made for sub-state areas, which may result in higher or lower unemployment rates in some sub-state areas. Also effective with the release of January 2005 data are updated metro area definitions. Please see <http://www.labor.state.ny.us/pdf/enys1104.pdf> for additional details.

Unemployed and UI Beneficiaries

The estimate of the number of unemployed includes all persons who had no employment during the reference week (the week including the 12th of the month), were available for work, except for temporary illness, and had made specific efforts to find employment sometime during the 4-week period ending with the reference week. Unemployment insurance (UI) beneficiaries include those who apply for and qualify for UI benefits. Consequently, the estimate of the number of unemployed and the number of UI beneficiaries do not necessarily move in tandem. Persons collecting UI benefits generally make up from 35 to 50 percent of the unemployed.

Job data

Monthly job data are obtained from the Current Employment Statistics survey of business establishments, which samples 18,000 establishments in New York State. The survey excludes self-employed workers, agricultural workers, unpaid family workers and domestic workers employed by private households. The data represent a count of jobs by place of work. Estimates for each month are revised the following month, as well as at the end of each year, as more complete data become available.

Press release availability

In an effort to distribute information faster and more reliably and to reduce shipping costs, the New York State Department of Labor's monthly press release is available exclusively online at: <http://www.labor.state.ny.us>.